

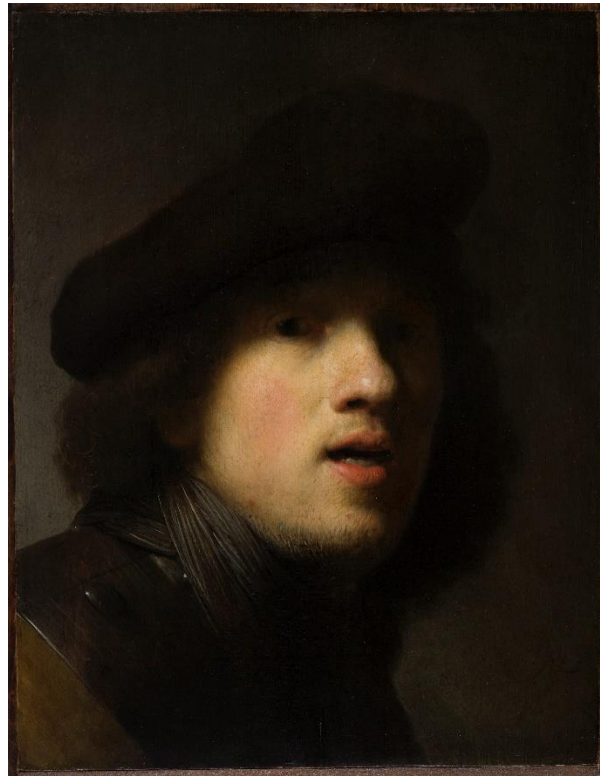


**FOR IMMEDIATE RELEASE**

*Images available upon request.*

**The Clowes Fund officially transfers the Rembrandt *Self-Portrait* (1629) to the IMA at Newfields**

*Clowes digital catalogue also awarded excellence by the Association of Art Museum Curators*



Rembrandt van Rijn (Dutch, 1606–1669), *Self-Portrait*, about 1629, oil on oak panel, 17-13/8 × 13-5/8 × 3/4 in. (panel).  
Indianapolis Museum of Art at Newfields, The Clowes Collection, 2023.4.

**INDIANAPOLIS**, September 7, 2023— In early May, The Clowes Fund leadership made the final transfer of artwork in the Clowes Collection to the Indianapolis Museum of Art at Newfields. Newfields is now the owner of previous long-term loan and cornerstone artwork, *Self-Portrait* by Rembrandt van Rijn (Dutch, 1606-1669). For four generations, The Clowes Fund has worked with the IMA to share the incredible Clowes Collection of European Old Masters with the Indianapolis community. The collection was assembled by Dr. George H.A. Clowes (1877-1958) and his wife, Edith Whitehill Clowes (1885-1967), and is of critical significance to the IMA's history, forming the core of our European, pre-1800 collection.

*Self-Portrait* is the jewel of the Clowes Collection, which has been housed at the Indianapolis Museum of Art since 1971. In this highly unconventional work painted in his early twenties (about 1629), Rembrandt casts his face in deep shadow and obscures most of its outward appearance. He conveys an intense preoccupation with his own artistic identity and inner imagination.

Also in May, the digital publication [MASTERPIECES from the CLOWES COLLECTION: Paintings](#) was awarded the 2023 Award for Excellence for Digital Publication by the Association of Art Museum Curators at the annual AAMC Conference. Only 11 of 175 nominated projects were honored, after being submitted and vetted by curator jurors from around the world. The catalogue features several innovative digital tools including high-resolution, zoomable images of artworks and conservation imagery. Pushing the boundaries of what is possible for a digital publication, the catalogue presents new discoveries at the intersection of art history, conservation and conservation science in an accessible format available to anyone with an internet connection.

The following individuals worked to collaborate on the digital publication: Annette Schlagenhauff, PhD, Curator Emeritus of European Art, Kjell M. Wangensteen, PhD, Associate Curator of European Art, Roxane Sperber, Clowes Associate Conservator of Paintings, Dylan Remeš Jensen, Editor and Manager of Publications, Daniel Keller, Senior Software Developer, Jill Dodge, Interactive Designer, Samantha Norling, Data Architect and Newfields Lab Manager, Samantha McCain Veach, Manager of Media, Celina Wu, Exhibitions and Experience Project Manager and Eric Lubrick, Senior Photographer.

The design and intuitive functionality of this online publication was made possible using Quire™, a multiplatform digital publishing tool, extensively customized by Newfields Lab, the in-house technology development team at Newfields. This digital publication was a collaborative effort of nearly a dozen Newfields staff members, including digital developers, designers, data managers, curators, conservators, scientists, editors and provenance researchers. [Browse the digital catalogue to learn more.](#)

Jonathan Clowes, President of The Clowes Fund, said "Seventy years ago, my grandparents, father and Uncle Allen established The Clowes Fund to ensure that the Clowes Collection of Art was properly cared for and accessible to the public. The board later decided that the Indianapolis Museum of Art should be the permanent home for the collection. We are pleased that the complete Clowes Collection, including Rembrandt's Self-Portrait, will be part of Newfields' mission—to enrich lives through exceptional experiences with art and nature—for generations to come."

[The Clowes Pavilion Reimagined](#) re-opened at the IMA in 2022 and showcases 100 objects spanning various times, cultures and media, offering a fresh perspective on significant social and historical themes. *The Clowes Pavilion Reimagined* is made possible with support from Allen Whitehill Clowes Charitable Foundation and The Clowes Fund.

###

#### **About Newfields:**

Newfields offers dynamic experiences with art and nature for guests of all ages. The 152-acre cultural campus features art galleries, lush gardens, a historic home, performance spaces, a nature preserve and sculpture park. From inspiring exhibitions in the IMA Galleries, to concerts in The Toby, to a stroll through The Garden with a glass of something cold, guests are invited to interact with art and nature in exciting new ways. Newfields is home to the Indianapolis Museum of Art, among the ten largest and ten oldest general art museums in the nation; the Lilly House, a National Historic Landmark; The Garden, featuring 40 acres of contemporary and historic gardens, a working greenhouse and an orchard; and The Virginia B. Fairbanks Art & Nature Park, one of the largest art and nature parks in the country. The Newfields campus extends outside of Indianapolis with Miller House and Garden in Columbus, Ind.—one of the nation's most highly regarded examples of mid-century Modernist architecture. For more information, visit [DiscoverNewfields.org](https://www.discovernewfields.org).

#### **Media Contacts:**

Beth Wood  
Communications Manager  
317-923-1331 ext. 252  
[bwood@discovernewfields.org](mailto:bwood@discovernewfields.org)