

2014–2015  
ANNUAL REPORT

ART + NATURE

INDIANAPOLIS  
MUSEUM  
OF ART  
IMA





MISSION

TO ENRICH LIVES THROUGH EXCEPTIONAL EXPERIENCES WITH  
**ART+NATURE**

TABLE OF CONTENTS

4	Dynamic Artworks + Vibrant Displays	28	Art Acquisition Highlights
6	Unique Experiences + Unexpected Events	32	Full List of Fiscal Year 2014–2015 Acquisitions
10	Innovative Design + Visionary Ideas	42	Financial Statement
12	Inspiring Curiosity + Exploring Environments	44	Donors
14	Eclectic Exhibitions + Artistic Expressions	50	IMA Board of Governors
18	From the Chair	51	IMA Affiliate Group Leadership
20	From the Melvin & Bren Simon Director and CEO	52	IMA Staff
24	Spectacular Views + Growing Impact	56	Global Impact
27	Garden Acquisition Highlights	58	Photo Credits





The IMA is committed to enhancing its Gardens and Park so guests will enjoy an exceptional experience in nature.



DYNAMIC + VIBRANT



## Dynamic Artworks + Vibrant Displays

With a new mission to provide exceptional experiences both inside and out, the IMA put plans in place to transform its Gardens and enhance its Park for a better guest experience. The creation of a lush, verdant perimeter of more than 2,200 plants, shrubs, and trees—including 18 selections never before seen in the Gardens—was a major focus in 2015. This spring you will see the spectacular results—a beautiful display of color—the result of planting 23,000 tulip bulbs, more than any previous year.

As part of the enhanced experience, guests are greeted at the Welcome Center and walk along the Garden Path to access the outdoor campus. A new eco-friendly Garden Tram, The Late Miss Kate, given in memory of Katie Sutphin, tours guests around the 52-acre oasis.

Special seasonal events punctuated the year. The Perennial Premiere kicked off spring at the Madeline F. Elder Greenhouse, offering over 600 plant varieties for sale, including hard-to-find perennials, native trees and shrubs, as well as gardening activities for all ages. The Gene and Rosemary Tanner Orchard became a magnet for involvement by volunteers and students who helped to plant seeds and harvest produce, which was donated to local charities.

And throughout the year, the IMA invited the community to celebrate the seasons in the Virginia B. Fairbanks Art and Nature Park: 100 Acres. June 2015 marked five years since the Park first opened, and it remains accessible to the public free of charge. Summer Solstice and Spring Equinox Community Days in the Park were among the most highly attended programs last year, and the IMA anticipates hosting more of these unique gatherings in the future.





**Unique Experiences + Unexpected Events**

ARTx is an exciting platform for innovative, participatory engagement that supports the IMA's mission. It offers smart, inventive, and highly interactive experiences that leverage all of the unique assets of the IMA campus. ARTx strengthens the IMA's reputation for quality experiences and intellectual rigor, while creating playful, unexpected points for engagement with a broad audience of all ages. In 2014–2015, IMA guests participated in a slate of more than 100 ARTx activities with over 450 local and regional artists.

**Avant Brunch**

Guests enjoyed music and food in unusual IMA settings for a one-of-a-kind multi-sensory experience.

**Monster Drawing Rally**

An art-making spectacle, this community night featured more than 70 artists working to produce as many drawings as possible in an allotted time, then immediately selling their artworks with proceeds supporting teen programs at the IMA.

**Summer Solstice Art Swap**

As part of this past year's annual Summer Solstice Community Day celebration, the IMA created a twist on an art fair, inviting guests to trade their own art for others' art.

**ARTxFIT Classes**

Like an athletic crossfit workout, this intensive four-week course encouraged participants to "muscle up" their art knowledge through discussions and making activities that encouraged new ideas and connections with art.

**Family Days**

The Family Day series featured themed museum and nature programming tailored to children and families, including special performances, hands-on activities, and a new family-friendly film series.

ARTx is made possible by a gift from The Efrogson Family Fund. IMA Community Days are supported by The Hagerman Group.



Avant Brunch  
Monster Drawing Rally



Family Days  
Summer Solstice Art Swap



Monster Drawing Rally  
Family Days





*Dream Cars* gave guests a rare opportunity to examine the intersection of forward-thinking design and art.



INNOVATIVE + VISIONARY

## Innovative Design + Visionary Ideas

In 2015, a new type of motor spectacle arrived in Indianapolis to rev up audience engagement at the IMA. *Dream Cars: Innovative Design, Visionary Ideas*, featured rare concept cars from the early 1930s to the 21st century, showcasing some of the most unique vehicles ever created in the automotive field.

Along with conceptual drawings and historical photos, *Dream Cars* explored the evolution of revolutionary automobile design that pushed the limits of the imagination and shaped the future of the auto industry. In its only US appearance in 2015, the exhibit featured both American and European concept car designs from top names including General Motors, Chrysler, BMW, Ferrari, Cadillac, Ford, and Porsche.

*Dream Cars: Innovative Design, Visionary Ideas* was organized by the Indianapolis Museum of Art in conjunction with the High Museum of Art, Atlanta, Georgia. The exhibition was curated by Sarah Schleuning, curator of decorative arts and design at the High Museum of Art, in consultation with award-winning automotive writer and IMA guest curator, Ken Gross.

The exhibition proved to have the third-highest attendance in IMA history. It also featured more than 13 audience participation elements that enabled guests to engage fully during and after their visits, including a magnet wall where families could design their own dream car, an iPad app with details and historic footage of each car, a kids' audio tour, an online "Which Dream Car Are You" quiz, and more.



This exhibition was presented by the Eli Lilly and Company Foundation and Ed Martin Automotive Group, with contributing support provided by Barnes & Thornburg LLP. Additional support was provided by ITT Technical Institute, The Stutz and Van Riper-Woodard Family Foundation, Chubb Group of Insurance Companies, Gregory & Appel Insurance, MacAllister Machinery Co., Browning Day Mullins Dierdorf, Indianapolis Motor Speedway + Verizon IndyCar Series, Lake City Bank, Fritz in Fishers, Stephen and Alice Tarr, Goldman, Sachs & Co., Harman. This exhibition was presented in the Allen Whitehill Clowes Special Exhibition Gallery May 3–August 23, 2015.







**Inspiring Curiosity + Exploring Environments**

The IMA strives to inspire, activate, and expand learning through the arts for academic audiences. Early-childhood education programs optimize windows of opportunity for learning in the arts by prioritizing engagement with students and schools for whom programs will have the greatest impact, including learners under the age of five and schools with limited or no arts opportunities.

At the IMA's Summer Camp, campers ages 4 to 13 learn alongside an accomplished team of educators and experiment with traditional and nontraditional materials to make a portfolio of work they can take home.



Various workshops are also available to children educated in the city's schools, while homeschooled children are reached with Art and Nature Homeschool Days.

Preschool-age children enjoy sing-alongs and hands-on art activities at the IMA's weekly weeWednesdays. The Star Studio invites young guests to create their own masterpieces using iPads and a dry erase wall. The Toddler Art Group program encourages exploration of the galleries through storytelling, music, and "art hunts."

And in 2015, the IMA became the first encyclopedic art museum nationally to provide an on-site preschool. This exciting effort to expand its academic



programming is provided through a partnership with St. Mary's Child Center, known for providing the highest-quality early-childhood education in the Indianapolis area. Students ages three to five enrolled in St. Mary's Child Center at the IMA participate in interest-driven experiential learning with opportunities for self-expression and learning through the arts. Anchored in Reggio Emilia-inspired teaching, the preschool program allows children to experience original works of art, explore the Gardens, and work on projects inspired by the Park.

Support for St. Mary's Child Center at the Indianapolis Museum of Art is provided by The Indianapolis Foundation, a CICF affiliate. Toddler Art Group is supported by a grant from the PNC Foundation. Educational programming is made possible by BKD CPAs and Advisors.



## Eclectic Exhibitions + Artistic Expressions

2014–2015 EXHIBITIONS SHOWCASED SIGNIFICANT WORKS OF ART FROM AROUND THE WORLD—

FROM SOUTHWESTERN STILL LIFES AND NEW-IMPRESSIONIST PORTRAITS TO

AMERICAN MODERNIST PHOTOGRAPHS, CLASSIC SILVER, PARTICIPATORY

SCULPTURES, CUTTING-EDGE FASHION, AND MORE.



### ***Cutting-Edge Fashion: Recent Acquisitions***

featured more than 60 groundbreaking garments from European, American and Japanese designers, including glamorous evening gowns, androgynous fashions, and punk-inspired street wear.







**On Stage!**

**Tiffany, Gorham, and the Height of American Silver, 1840–1930**



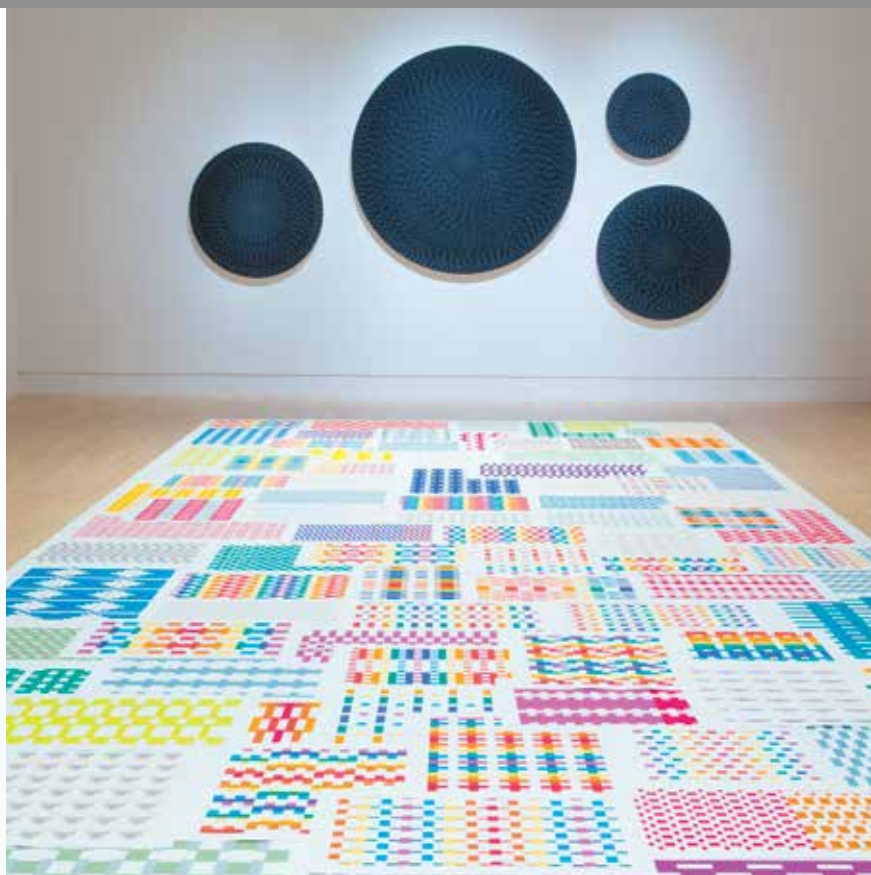
Presented by The Alliance of the Indianapolis Museum of Art. Additional support provided by the Ruth Lilly Philanthropic Foundation.



Made possible through the generosity of the Allen Whitehill Clowes Charitable Foundation, with additional support provided by an award from the National Endowment for the Arts. Face to Face Education Supporters: The Alliance of the IMA (Gold Supporter); E-gineering (Gold Supporter); Honda Manufacturing of Indiana, LLC (Silver Supporter); Monarch Beverage (Silver Supporter); Steel Dynamics, Inc. Engineered Bar Products Division (Silver Supporter).

**Face to Face: The Neo-Impressionist Portrait, 1886–1904**

**Michelle Grabner: Weaving Life into Art**



Made possible by the Efroymson Contemporary Art Fund, an endowed fund at the IMA. The Efroymson Contemporary Art Fund is an endowed fund that was established in 2006 by the Efroymson Family Fund to support work by emerging and established local, national, and international contemporary visual artists through a rotating installation program in the Efroymson Family Entrance Pavilion. Past artists and collectives whose work has been supported by the Fund include Allora & Calzadilla, Ball-Nogues Studio, Tony Feher, Spencer Finch, Friends with You, Orly Genger, William Lamson, Judith G. Levy, Mary Miss, Julian Opie, Heather Rowe, Alyson Shotz, Julianne Swartz and Sopheap Pich.

**Erwin Wurm: Euclidean Exercises**

**The Rise of American Modernism**



In addition to *Cutting-Edge Fashion: Recent Acquisitions*, this past year's exhibitions appealed to traditional and new audiences alike, offering something for everyone.

**On Stage!** explored the meaning behind traditional Japanese performing arts through prints from the 18th through 20th centuries. Guests also took in the drama and pageantry of Japanese Kabuki and Noh theater.

**Face to Face: The Neo-Impressionist Portrait, 1886-1904**, was the first exhibition to explore the rich realm of the Neo-Impressionist portrait, featuring 30 oil paintings and 20 drawings by important French, Belgian, and Dutch artists.

**Erwin Wurm: Euclidean Exercises** welcomed guests to use everyday objects to become the subjects of irreverent, participatory sculptures and to discover other Wurm sculptures, photographs and videos located in the Contemporary and European galleries.

**Michelle Grabner: Weaving Life into Art** was the artist's first solo exhibition at an encyclopedic museum; it featured pieces created especially for Indianapolis and included special events that engaged the local arts community.

**Tiffany, Gorham, and the Height of American Silver, 1840–1930**, dazzled guests with more than 60 splendid pieces of 19th- and 20th-century silver, showcasing the legacy of the American silverware industry.

**The Rise of American Modernism** highlighted the impact of European Modernists on American counterparts, featuring 29 works by Alfred Stieglitz, Man Ray, Henri Matisse, Pablo Picasso, Paul Cézanne and others from the IMA's collection.

**Georgia O'Keeffe and the Southwestern Still Life** featured more than 50 dynamic works showcasing the stark beauty, unusual architecture and unique light of the American Southwest. Organized by Joseph S. Czestochowski. Produced by International Arts®. Curated by Charles C. Eldredge. This exhibition was presented by The Alliance of the IMA, with additional support provided by Barnes & Thornburg LLP. Education Supporters: Christel DeHaan Family Foundation (Platinum Supporter); Buckingham Foundation (Silver Supporter); The Lacy Foundation (Silver Supporter)

See pages 58-59 for full art and photo credits.



## FROM THE CHAIR

AS THE HIGHLIGHTS PRESENTED ON THE PRECEDING PAGES DEMONSTRATE: IT HAS BEEN AN EXTRAORDINARY YEAR. OUR ACCOMPLISHMENTS WOULD NOT HAVE BEEN POSSIBLE WITHOUT THE COMMITMENT OF THE MANY INDIVIDUALS WHO CONTRIBUTE TO THE IMA'S SUCCESS.

I WOULD LIKE TO THANK OUR MEMBERS, STAFF, AND VOLUNTEERS WHO HAVE WORKED HARD TO MAKE THE IMA THE INSPIRING DESTINATION IT IS TODAY. IN 2015, APPROXIMATELY 600 VOLUNTEERS DONATED AN ASTONISHING 15,300 HOURS OF WORK—EQUAL TO THE WORK OF MORE THAN 7-1/2 FULL-TIME EMPLOYEES. I ALSO WANT TO THANK CURRENT AND PAST MEMBERS

OF THE BOARD OF GOVERNORS AND LIFE TRUSTEES FOR THE GENEROUS SUPPORT AND STEADY LEADERSHIP THEY HAVE PROVIDED THIS INSTITUTION.

While the IMA is robust and growing, it is also evolving. During this past year, in particular, we made key changes to ensure the future of the institution. These changes spring from two key goals: 1) a desire to ensure that the IMA remains relevant to our audiences; and 2) a commitment to ensure that the IMA's financial model is sustainable over the long term.

The theme of the year's annual report is not a coincidence. The IMA has long been heralded as one of the nation's oldest and largest art museums. But surrounding the building housing our magnificent collections is another asset that has received less attention: our extraordinarily beautiful Gardens and Park, one of the largest campuses of any museum in the country.



With this in mind, during the past year, we broadened the IMA's vision to encompass Art + Nature, and developed a new mission statement that reflects this vision: "to enrich lives through exceptional experiences with art and nature." The senior leadership team and several board committees are currently undertaking an array of marketing studies and financial analyses, the results of which will enable us to develop a comprehensive plan for the IMA's campus.

As an institution, the IMA is financially strong. We are fortunate to have the 15th largest endowment of a museum in the country. However, about one-third of the value of the endowment is offset by a major liability on our balance sheet: approximately \$120 million in outstanding debt—debt largely incurred to fund the last expansion of the Museum's galleries. The members of the board and senior leadership team are committed to developing a new business model that will increase the IMA's revenue and reduce its reliance on endowment income, as well as the size of its debt.

Based on the data we have gained so far and the experience of other major public gardens, we believe that a significant investment in the Gardens may not only further broaden the IMA's membership—now at an all-time high—but also contribute significantly to the IMA's earned revenue stream and enable us to further reduce our reliance on income from the endowment to fund operations. It is this hypothesis that we will be testing over the next few years, and it is the rationale

behind the changes and enhancements we have made to the campus during the past year.

Three years ago, the Board and senior leadership team adopted a goal to reduce the draw on the endowment to 5.50% by fiscal year 2017. I am pleased to report that we are making great progress toward this goal. In fiscal year 2015, we reduced the draw to 5.85% and we expect the draw will be below 5.50% the fiscal year ending June 30, 2016.

**"[We] adopted a goal to reduce the draw on the endowment to 5.05% by fiscal year 2017. . . we are making great progress toward this goal . . . and expect the draw will be below 5.50% for the fiscal year ending June 30, 2016."**

On a personal note, it has been a great pleasure to work with Dr. Charles L. Venable and the talented team of individuals who lead the IMA. I am confident that the current leadership team has the talent, the creative energy, the intelligence, and the experience to help us develop a new path for the institution about which we all care so deeply.

**Thomas Hiatt**  
Chair of the IMA Board of Governors  
2014–2015



## FROM THE MELVIN & BREN SIMON DIRECTOR AND CEO

THE INDIANAPOLIS MUSEUM OF ART LIVES AT THE INTERSECTION OF ART AND NATURE, WHERE VISION, CREATIVITY, AND INNOVATION COME TOGETHER TO ENGAGE AND DELIGHT AUDIENCES WITH UNPARALLELED EXPERIENCES. FISCAL YEAR 2014–2015 SAW MANY NEW AND EXCITING PROGRAMS, INSTALLATIONS, AND IMPROVEMENTS AS A RESULT OF OUR NEW 10-YEAR STRATEGIC PLAN THAT DETAILS OUR MISSION AND THE FOLLOWING OBJECTIVES:

- PROVIDE EXCEPTIONAL EXPERIENCES THAT LEVERAGE ALL OF THE IMA'S STRENGTHS. BUILD ATTENDANCE AND MEMBERSHIP. IMPROVE QUALITY OF LIFE IN INDIANA.
- ACHIEVE INSTITUTIONAL LEADERSHIP BY ATTRACTING AND DEVELOPING EXCEPTIONAL TALENT. ACTIVELY ENGAGE WITH VISITORS AND RESIDENTS IN OUR COMMUNITY AND REGION.
- ENSURE THE IMA'S FISCAL FUTURE BY DEVELOPING A SUSTAINABLE BUSINESS MODEL THAT THRIVES ON AN ENDOWMENT DRAW RATE OF 5.0% OR LESS.

From our visionary Board of Governors and life trustees, to our dedicated staff, volunteers, members, and donors who help bring our programs and exhibits to life, we should all feel proud of how the past fiscal year's activities have helped in meeting the above objectives and contributing to the robust vitality of the IMA.

This year's annual report is themed Art + Nature, which pays homage to the IMA's mission to enrich lives through exceptional experiences with art



and nature. At the core of this new mission is the elevation of our Gardens and enhancement of our Park so they can attract and engage a broader segment of the public. This past year laid the groundwork to enhance the outdoor experience here. First, we enhanced the Gardens by reserving them for pedestrians and adding new sidewalks, benches, and bike racks to the campus. Second, we installed new signage and introduced a Garden Tram so guests can learn more about the property's history and horticulture displays. Third, we improved guest services with rigorous employee training and a new e-commerce system. With these enhancements in place, we elevated our public programming with family and community days that attracted guests to our beautiful galleries, Gardens, Park, and historic homes.

As part of our ongoing objective to build attendance and membership, we also instituted the following sustainable practices this past year. We returned to our general admission policy, offering free parking and free entrance to special exhibitions with admission. We now provide a single point of entry, so we can more effectively greet, count, and engage with our guests. Extending our accessibility to the community is always important to us, so we continue to offer free times periodically throughout the year thanks to donors dedicated to making art accessible to all. Admission remains free from 4 pm to 9 pm every first Thursday of the month, as

well as on special holidays and Community Days. Likewise, we joined the statewide Access Pass program to ensure low-income families access to the IMA, and we provide free access for Marion County students on public school tours including free memberships to four-year students of Marion County colleges.

In addition to integrating new sustainable practices, we broadened our engagement with audiences, offering something for everyone. Examples include our many ARTx events (e.g., Avant Brunch, Monster Drawing Rally, ArtxFit, and Family Days) and the Flower Show held in cooperation with the Indianapolis Garden Club. We also welcomed the IMA's first performing artist in residence, Know No Stranger, as they dazzled audiences with their whimsical Optical Popsicle variety show, a mishmash of puppets, video, live music, and dance.

**“This year's annual report is themed Art + Nature, which pays homage to the IMA's mission to enrich lives through exceptional experiences with art and nature.”**

In April 2015, through a partnership with St. Mary's Child Center, the IMA became the first encyclopedic art museum in the nation to offer



a preschool for children ages three to five. The IMA is currently seeking philanthropic support to expand a scholarship program and provide financial aid to more students.

“In fiscal year 2014–2015, we made 1,430 art acquisitions and loaned 31 pieces to major exhibitions at museums worldwide. . .”

When guests visited the IMA this past year, they did not leave disappointed. Thanks to the visionary leadership and innovation of our curators and horticulturists, the impact of our exhibits and programs exceeded expectations. 2014–2015 highlights included:

- *Dream Cars: Innovative Design, Visionary Ideas*
- *On Stage!*
- *Face to Face: The Neo-Impressionist Portrait, 1886-1904*
- *Georgia O'Keeffe and the Southwestern Still Life*
- *Erwin Wurm: Euclidean Exercises*
- *Michelle Grabner: Weaving Life into Art*
- *Tiffany, Gorham, and the Height of American Silver, 1840-1930*
- *Cutting-Edge Fashion: Recent Acquisitions*
- *The Rise of American Modernism*

Beyond exhibitions, we have also done many things to make sure our collections are accessible to the world. We've expanded our reach to more guests online. For example, the Miller House and Garden's archives were put online. Thousands of scholars have taken advantage of this robust architectural landscape design resource. Online guests have also made use of our new collection webpages that were rolled out this past year. We placed 24,124 artworks online so people around the world can research and enjoy our collection.

We are continually looking for new ways to engage our guests. One example is *Conservation in Clowes: Portrait of a Lady*, which invited guests to see firsthand how an IMA conservator restores a painting to its former glory. We hope to do more of these behind-the-scenes programs in 2016.

This past year, we also concluded our Innovative Museum Leaders Speaker Series, sponsored by the Lilly Endowment. The series showcased successful museum, garden, and foundation leaders from across the country. 2015 highlights included discussions by Paul Redman of Longwood Gardens and Mar Dixon, creator of many projects such as MuseoMixUK and MuseumCamp.

I am exceedingly proud of the IMA's accomplishments this past year, and news about the success of our exhibits and programs was shared around the world. An exciting spectrum of

news stories featured the IMA this past year including:

- 5 stories in international publications: *The Guardian* and *The Globe and Mail*
- 56 stories in top-tier national media outlets: *USA Today*, *The Wall Street Journal*, *CNN*, and *NPR*
- 66 stories in trade media outlets: *Fine Art Connoisseur*, *Dwell*, and *Art Daily*
- 372 stories in local media outlets: 26 radio, 69 television, 277 online and print

The IMA would not be the great institution that it is without the ongoing work of our dedicated staff to collect, preserve, and share all that the Museum, Gardens, Park, and historic homes offer. In fiscal year 2014–2015, we made 1,430 art acquisitions and loaned 31 pieces to major exhibitions at museums worldwide, while 3,820 IMA artworks were featured in publications ranging from blogs to serious scholarly publications. Nearly four acres of invasive honeysuckle and euonymus were removed from the Park, while 23,000 new tulip bulbs were planted in the Gardens.

Finally, I am very pleased to report for the fiscal year 2014–2015 the following accomplishments:

- **Contributed Support:** Annual membership revenue came in 8% ahead of 2015 expectations. At the end of the fiscal year, membership stood at 12,517, representing a 30% growth over last year.
- **Public Programs:** Earned revenue from Audience Engagement and Public Programs increased 17%

in 2015 and is expected to be even more in 2016.

- **Expenses:** We do an exceptional job of keeping expenses down; total 2015 expenses came in under budget by \$500,000.

In 2016, Art + Nature will continue to shape the destiny of the IMA. However, the real “plus” will be the people who embrace the vision and work to help the IMA achieve success. For this reason, I would like to extend another heartfelt thanks to our staff, Board of Governors, life trustees, donors, volunteers, and members. With your support, we'll continue to provide extraordinary experiences with art and nature to the people of Indianapolis and guests from around the world for years to come.

**Charles L. Venable, PhD**  
The Melvin & Bren Simon Director and CEO



# SPECTACULAR + GROWING

## Spectacular Views + Growing Impact

The IMA continues to invest in its Gardens with the goal of making them one of the best horticultural attractions in the region. Recently, the entire IMA campus was enhanced with new sidewalks, pedestrian walkways, garden plantings and signage. The fully renovated Madeline F. Elder Greenhouse is a centerpiece of the Gardens, allowing guests to extend their engagement with the IMA by purchasing high-quality plants for their own homes. A new tour on the eco-friendly Garden Tram, The Late Miss Kate, given in memory of Katie Sutphin, enables guests to appreciate the more than 200,000 species, including 23,000 tulips planted in fiscal year 2014-2015. Beautiful redbud and dogwood trees, hyacinths, and azaleas bloom in the spring; while oriental lilies, hydrangeas, dahlias, and coneflowers put on a spectacular display of color throughout the summer. The IMA is committed to continuing to enhance the Gardens for lasting beauty.







A new tour on the eco-friendly Garden Tram, The Late Miss Kate, given by Charles and Peggy Sutphin in memory of Katie Sutphin, enables guests to appreciate the more than 200,000 species, including 23,000 tulips recently planted.



*Baptisia 'Cherries Jubilee'*  
*Lobelia 'Monet Moment'*  
Outstanding display



*Kniphofia 'Pineapple Popsicle'*  
*Prunus serrulata 'Kwanzan'*  
*Petalostemum purpureum*



### Garden Acquisition Highlights

#### PERENNIALS

- Arisaema sikokianum* Gaudy Jack
- Asarum shuttleworthii* var. *harperi* 'Velvet Queen' Ginger
- Rhodea japonica* Sacred Lily
- Lobelia 'Monet Moment'* Cardinal Flower
- Petalostemum purpureum* Purple Prairie Clover
- Baptisia 'Solar Flare'* False Indigo
- Baptisia 'Cherries Jubilee'* False Indigo
- Baptisia 'Blueberry Sundae'* False Indigo
- Kniphofia 'Pineapple Popsicle'* Red Hot Poker

#### TREES

- Parrotia subaequalis* Chinese Parrotia
- Prunus serrulata* 'Kwanzan' Japanese Flowering Cherry
- Halesia carolina* 'Arnold Pink' Carolina Silverbell
- Picea abies* 'Cupressina' Columnar Norway Spruce
- Ulmus americana* 'Princeton' American Elm Tree

#### SHRUBS

- Lagerstroemia indica* 'Rhapsody in Pink' Crape myrtle
- Poliiothyrsis sinensis* Chinese Pearlbloom

#### GRASSES

- Schizachyrium scoparium* 'MinnBlueA' Little Bluestem
- Schizachyrium scoparium* 'Jazz' Little Bluestem
- Schizachyrium scoparium* 'Blaze' Little Bluestem
- Schizachyrium scoparium* 'Prairie Blues' Little Bluestem
- Schizachyrium scoparium* 'Blue Heaven' Little Bluestem
- Schizachyrium scoparium* 'Prairie Munchkin' Little Bluestem

#### BULBS

- Allium* 'Graceful' Ornamental Onion
- Allium* 'Purple Sensation' Ornamental Onion
- Allium jesdianum* 'Early Emperor' Ornamental Onion
- Allium jesdianum* 'White Empress' Ornamental Onion
- Allium unifolium* Ornamental Onion
- Allium schubertii* Ornamental Onion



## Art Acquisition Highlights

The IMA's collection of more than 54,000 works is constantly evolving. Each year, the Museum acquires new works to enhance its diverse holdings with the goal of building an exceptional collection of art that represents different cultures and periods of history. This past year, the IMA was delighted to acquire unique textiles, iconic fashions, as well as substantial traditional and contemporary artworks from well-known artists.

### Asian

Tanaka Ryōhei 田中良平, **Chrysanthemum** Gift of Carolyn J. Greer in memory of her mother, Amelia Burge Eppinimer 2014.123

Unknown, **A Lingbi Scholar's Rock (Gōngshi)** 靈璧供石 Gift of Dr. Alan Helms in memory of Lillian and Bud Helms 2014.184A-B

Utagawa Hiroshige, **Harimaze of 3 Tokaido Scenes: Hara, Yoshiwara, and Kanbara** Purchased with funds donated by Mrs. Kimie Iijima 2014.114

Zhāng Hóng 張鴻, **Birds in a Crab-apple Tree, after Zhao Chang** 仿趙昌花鳥圖 Gift of Francine and Roger Hurwitz in honor of Dr. James Robinson 2014.166

### Contemporary

Jeppe Hein, **Bench Around the Lake** Commissioned by the Indianapolis Museum of Art, Supported by Friends of Bret Waller, Jane Weldon Myers Acquisition Fund, Mrs. Pierre F. Goodrich Endowed Art Fund, Roger G. Wolcott Fund, E. Hardey Adriance Fine Arts Acquisition Fund in memory of Marguerite Hardey Adriance, Alice and Kirk McKinney Fund, Louisa K. Valentine Memorial Contemporary Art Fund, Contemporary Art Discretionary Fund 2014.103A-O

### Design Arts

Ayala Serfaty, **Memory, 2011** Gift of Daniella Ohad, Maison Gerard, Ltd., New York, and the artist. 2015.14

George Nelson, Herman Miller Furniture Company, **Home Office Desk model 4658** Design Arts Society Fund 2014.98A-F

Christopher Dresser, Hukin & Heath, **Lidded Tureen with Ladle** Gift of Dr. and Mrs. Goldberg 2014.185A.1-B



Chrysanthemum Tanaka Ryōhei



Memory, 2011 Ayala Serfaty

Lidded Tureen with Ladle Christopher Dresser, Hukin & Heath

Bench Around the Lake Jeppe Hein

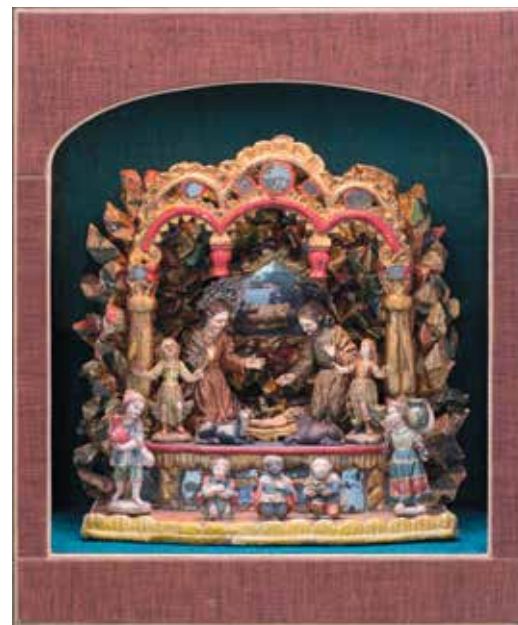






◀ Dress Yoshiyuki Miyamae, Issey Miyake Poppy (quilt) Marie Daugherty Webster ▲  
Creche Altarpiece with Display Box Alexander Hayden Girard

Portrait of the Artist After Hans Holbein, the Younger  
Cahier de six eaux-fortes, vues de Hollande Johan Barthold Jongkind



**European**  
After Hans Holbein, the Younger, **Portrait of the Artist**  
The Clowes Collection 2014.90

Hans Holbein, the Younger, **Portrait of Unknown Lady**  
The Clowes Collection 2014.91

**Miller House**  
Alexander Hayden Girard, **Creche Altarpiece with Display Box** Gift of Margaret, Catherine, Elizabeth and Will Miller MH2010.595A-B

**Prints, Drawings, and Photographs**  
Andy Goldsworthy, **Lowther Foothills, Black Hill**  
Gift of Dr. Steven Conant in memory of Dr. Thomas Kuebler 2015.11

Johan Barthold Jongkind, **Cahier de six eaux-fortes, vues de Hollande** Gift of INB Financial Corporation by exchange 2014.109.1-8

**Textile and Fashion Arts**  
André Courrèges, **Dress** Purchased with funds donated by Lorene Burkhardt to the Fashion Arts Society Acquisition Fund 2014.104A-B

Rei Kawakubo, Comme des Garçons, **Ensemble (Bodice & Skirt) from "Bump" Collection** Fashion Arts Society Acquisition Fund, Deaccessioned Textiles Fund by exchange, purchased with funds provided by F. Timothy and Nancy Nagler 2014.106A-B

Rei Kawakubo, Comme des Garçons, **Ensemble (Bodice & Trousers)** Fashion Arts Society Acquisition Fund, purchased with funds provided by Tina Pasquinelli and Gary Jacobson 2014.107A-B

Yoshiyuki Miyamae, Issey Miyake, **Dress** Gift of Ann M. Stack 2015.5

Marie Daugherty Webster, **Poppy (quilt)** Webster Collection, Gift of Rosalind Webster Perry 2014.108

Stephen Jones, Comme des Garçons, **Hat (Bunny Ears)** Fashion Arts Society Acquisition Fund, purchased with funds provided by Tina Pasquinelli and Gary Jacobson 2015.4

Yves Saint Laurent, Tunic, **"Safari" Collection and Belt** Fashion Arts Society Acquisition Fund 2015.1A-B

Kom people, **Medicine Man's Ritual Tunic, kheghechho** Anonymous IV Art Fund 2015.2



# Full List of Fiscal Year 2014–2015 Acquisitions

## African

Cameroon Grassfields, **Pipe with Figure**, 1850–1897, clay. Gift of Ronald Robertson 2014.165

Cameroon Grassfields, **Pipe with Human Face**, 1850–1897, clay. Gift of Ronald Robertson 2014.164

## Asian

Eijiro Kobayashi, **Evening Cool on the Sumida River**, 1900–1920, ink on paper. Gift of Donald A. and Loryne M. Coffin 2014.168

Higashi Kaoru, Japanese, 1957, **Untitled**, ink on paper. Gift of Donald A. and Loryne M. Coffin 2014.171

Juso Watanabe, Japanese, 1928, **Street Scene #1**, ink on paper. Gift of Donald A. and Loryne M. Coffin 2014.182

Juso Watanabe, Japanese, 1928, **Street Scene #4**, 1976, ink on paper. Gift of Donald A. and Loryne M. Coffin 2014.170

Koho Shoda, Japanese, 1877–1924, **Torii (Shrine Gate) at Miyajima**, 1930, color woodblock print, ink on paper. Gift of Donald A. and Loryne M. Coffin 2014.173

Koho Shoda, Japanese, 1877–1924, **Stars over Biwa Lake**, 1930, ink on paper. Gift of Donald A. and Loryne M. Coffin 2014.183

Miwa Kyusetsu XI, Japanese, 1910–2012, **Mizusashi (water jar for tea ceremony) with cover, Hagi ware**, about 2010, stoneware with feldspathic glaze. Jane Weldon Myers Art Fund 2015.6A-B

Sakai Hoitsu, Japanese, 1761–1828, **calligraphy: haikai poem by Kikaku**, late 18th century–early 19th century, ink on silk. Gift of Francine and Roger Hurwitz in honor of Dr. John Teramoto 2014.167

Seiko Tachibana, Japanese, **TOT #17**, 2002, ink on paper. Gift of Donald A. and Loryne M. Coffin 2014.174

Shoichi Ida, Japanese, 1941–2006, **Between Vertical and Horizon-Descended Triangle**, 1987, ink on paper. Gift of Donald A. and Loryne M. Coffin 2014.172

Tajima Hiroyuki, Japanese, 1911–1984, **Balade**, 1971, ink on paper. Gift of Donald A. and Loryne M. Coffin 2014.169

Tajima Hiroyuki, Japanese, 1911–1984, **Blue Evidence B**, 1976, ink on paper. Gift of Donald A. and Loryne M. Coffin 2014.175

Tajima Hiroyuki, Japanese, 1911–1984, **Green Wall**, 1970, ink on paper. Gift of Donald A. and Loryne M. Coffin 2014.177

Tajima Hiroyuki, Japanese, 1911–1984, **Nativity**, 1977, ink on paper. Gift of Donald A. and Loryne M. Coffin 2014.178

Tajima Hiroyuki, Japanese, 1911–1984, **Red Kimono**, 1971, ink on paper. Gift of Donald A. and Loryne M. Coffin 2014.176

Tajima Hiroyuki, Japanese, 1911–1984, **Small Monument**, 1966, ink on paper. Gift of Donald A. and Loryne M. Coffin 2014.179

Tajima Hiroyuki, Japanese, 1911–1984, **Small Print**, 1976, ink on paper. Gift of Donald A. and Loryne M. Coffin 2014.180

Tanaka Ryōhei 田中良平, Japanese, 1933, **An Alley**, 1970, etching and aquatint on paper. Gift of Carolyn J. Greer in memory of her mother, Amelia Burge Eppihimer 2014.121

Tanaka Ryōhei 田中良平, Japanese, 1933, **Chrysanthemum**, 1969, etching and aquatint on paper. Gift of Carolyn J. Greer in memory of her mother, Amelia Burge Eppihimer 2014.123

Tanaka Ryōhei 田中良平, Japanese, 1933, **Koshi No. 1**, 1964, etching and aquatint on paper. Gift of Carolyn J. Greer in memory of her mother, Amelia Burge Eppihimer 2014.122

Tanaka Ryōhei 田中良平, Japanese, 1933, **Pansies**, 1969, etching and aquatint on paper. Gift of Carolyn J. Greer in memory of her mother, Amelia Burge Eppihimer 2014.124

Tanaka Ryōhei 田中良平, Japanese, 1933, **Pine Tree (small)**, 1970, etching and aquatint on paper. Gift of Carolyn J. Greer in memory of her mother, Amelia Burge Eppihimer 2014.118

Tanaka Ryōhei 田中良平, Japanese, 1933, **Pine Trunk**, 1967, etching and aquatint on paper. Gift of Carolyn J. Greer in memory of her mother, Amelia Burge Eppihimer 2014.117

Tanaka Ryōhei 田中良平, Japanese, 1933, **Remaining Snow No. 1**, 1971, etching and aquatint on paper. Gift of Carolyn J. Greer in memory of her mother, Amelia Burge Eppihimer 2014.125

Tanaka Ryōhei 田中良平, Japanese, 1933, **Thatched Roof No. 4**, 1968, etching and aquatint on paper. Gift of Carolyn J. Greer in memory of her mother, Amelia Burge Eppihimer 2014.119

Tanaka Ryōhei 田中良平, Japanese, 1933, **Winter Tree**, 1967, etching and aquatint on paper. Gift of Carolyn J. Greer in memory of her mother, Amelia Burge Eppihimer 2014.120

Tanaka Ryōhei 田中良平, Japanese, 1933, **Wood Wall**, 1964, etching and aquatint on paper. Gift of Carolyn J. Greer in memory of her mother, Amelia Burge Eppihimer 2014.116

Toshi Yoshida, Japanese, 1911, **Early Spring in Azumino**, 1989, ink on paper. Gift of Donald A. and Loryne M. Coffin 2014.181

Unknown, Chinese, **A Lingbi Scholar’s Rock (gōngshi)** 靈壁供石, n.d., naturally formed aggregate of one or more minerals with carved, stained wood base. Gift of Dr. Alan Helms in memory of Lillian and Bud Helms 2014.184A–B

Unkoku Toyo, Japanese, 1612–1688, **Landscape with Travelers on Mountain Paths**, about 1650, ink, light color on paper, and wood. Gift of Thomas and Janet Morgan in memory of Lucy G. Morgan and William L. Morgan, Sr. 2014.97

Utagawa Hiroshige, Japanese, 1797–1858, **Harimaze of 3 Tokaido scenes: Hara, Yoshiwara, and Kanbara**, 1852, color woodblock print. Purchased with funds donated by Mrs. Kimie Iijima 2014.114

Utagawa Kunitsuna, Japanese, 1805–1868, **Struggle between Sumizome, Spirit of the Cherry Tree, and Kuronushi**, 1858, color woodblock print. Gift of the Asian Art Society of the Indianapolis Museum of Art in Memory of David Kahn 2014.113A-B

Utagawa Yoshiiku, 1833–1904, **A Scene at the Shinagawa-ya in Fukagawa (Fukagawa Shinagawaya rojo no zu)**, 1868, color woodblock print. Gift of the Asian Art Society of the Indianapolis Museum of Art in Memory of Timothy Garrigus 2014.115A-C

Zhāng Hóng 張鴻, Chinese, **Birds in a Crab-apple Tree, after Zhao Chang** 仿超昌花鳥图, about 1700, ink and color on paper. Gift of Francine and Roger Hurwitz in honor of Dr. James Robinson 2014.166

## Contemporary

Jeppe Hein, Danish, 1974, **Bench Around the Lake**, 2010, galvanized steel, yellow paint. Commissioned by the Indianapolis Museum of Art, Supported by Friends of Bret Waller, Jane Weldon Myers Acquisition Fund, Mrs. Pierre F. Goodrich Endowed Art Fund, Roger G. Wolcott Fund, E. Hardey Adriance Fine Arts Acquisition Fund in memory of Marguerite 2014.103A-O

## Decorative Arts

Alice Ehmman, Austrian, 1905, Viennese Art Ceramic Workshop, **salt cellar**, 1927, glazed earthenware. Gift from the Collection of William Swann and William Leazer 2014.155

Fran ç. Schmied, Swiss, 1873–1941, Viennese Art Ceramic Workshop, **book mark**, 1920–1930, woodblock print, ink on paper. Gift from the Collection of William Leazer 2014.159

Friederike Low-Lazar, Austrian, 1891–1975, Viennese Art Ceramic Workshop, **Table place card (no 697)**, 1912, color lithograph. Gift from the Collection of William Leazer 2014.163.3

Friederike Low-Lazar, Austrian, 1891–1975, Viennese Workshop, **Table place card (no. 702)**, 1912, color lithograph. Gift from the Collection of William Leazer 2014.163.2

Hans Stoltenberg-Lerche, German, 1867–1920, **water jug**, designed 1899–1900, pewter. Gift from the Collection of William Swann and William Leazer 2014.127

Hermann Fauser, German, 1874–1947, J.P. Kayser and Son, **bread basket and sweetmeat basket**, designed 1903–1904, pewter. Gift from the Collection of William Swann and William Leazer 2014.139

Hermann Fauser, German, 1874–1947, Hugo Leven, German, 1874–1956, **vase**, designed 1904, pewter. Gift from the Collection of William Swann and William Leazer 2014.150

Hugo Leven, German, 1874–1956, **Auk jug**, 1900–1901, pewter. Gift from the Collection of William Swann and William Leazer 2014.131

Hugo Leven, German, 1874–1956, J.P. Kayser and Son, **biscuit jar with lid**, designed 1901–1902, pewter. Gift from the Collection of William Swann and William Leazer 2014.137A-B

Hugo Leven, German, 1874–1956, J.P. Kayser and Son, **candelabrum**, designed 1901–1902, pewter. Gift from the Collection of William Swann and William Leazer 2014.141

Hugo Leven, German, 1874–1956, J.P. Kayser and Son, **candlestick**, designed 1901–1902, pewter. Gift from the Collection of William Swann and William Leazer 2014.130

Hugo Leven, German, 1874–1956, J.P. Kayser and Son, **chocolate pot**, designed 1902, pewter. Gift from the Collection of William Swann and William Leazer 2014.144

Hugo Leven, German, 1874–1956, J.P. Kayser and Son, **Crumb Pan with Scoop**, designed 1903–1904, pewter. Gift from the Collection of William Swann and William Leazer 2014.145A-B

Hugo Leven, German, 1874–1956, J.P. Kayser and Son, **jug**, designed 1901–1902, pewter. Gift from the Collection of William Swann and William Leazer 2014.136

Hugo Leven, German, 1874–1956, J.P. Kayser and Son, **knife rest**, designed 1904, pewter. Gift from the Collection of William Swann and William Leazer 2014.146

Hugo Leven, German, 1874–1956, J.P. Kayser and Son, **Smoking Set**, designed 1901–1902, pewter. Gift from the Collection of William Swann and William Leazer 2014.143A-E

Hugo Leven, German, 1874–1956, J.P. Kayser and Son, **tray**, designed 1901–1902, pewter. Gift from the Collection of William Swann and William Leazer 2014.142

Hugo Leven, German, 1874–1956, J.P. Kayser and Son, **waiter (tray)**, designed 1902–1903, pewter. Gift from the Collection of William Swann and William Leazer 2014.135

Hugo Leven, German, 1874–1956, J.P. Kayser and Son, **watering can**, Designed 1896–1897, pewter. Gift from the Collection of William Swann and William Leazer 2014.126

J.P. Kayser and Son, **Crumb Pan with Scoop**, designed 1900–1902, pewter. Gift from the Collection of William Swann and William Leazer 2014.129A-B

J.P. Kayser and Son, **Inkwell**, designed 1901–1902, pewter. Gift from the Collection of William Swann and William Leazer 2014.132

J.P. Kayser and Son, **inkwell**, designed 1907, pewter. Gift from the Collection of William Swann and William Leazer 2014.151

J.P. Kayser and Son, **Inkwell**, designed 1903–1904, pewter. Gift from the Collection of William Swann and William Leazer 2014.147A-C

J.P. Kayser and Son, **Lamp**, designed 1901–1902, pewter. Gift from the Collection of William Swann and William Leazer 2014.138A-C

J.P. Kayser and Son, **Lidded Biscuit Box**, designed 1901–1902, pewter. Gift from the Collection of William Swann and William Leazer 2014.140A-B

J.P. Kayser and Son, **Lidded Soap Dish**, designed 1900–1901, pewter. Gift from the Collection of William Swann and William Leazer 2014.134A-B

J.P. Kayser and Son, **Liquor Service and Jug**, designed 1895–1896, pewter. Gift from the Collection of William Swann and William Leazer 2014.128A-H

J.P. Kayser and Son, **meat dish with cover**, 1900–1904, pewter. Gift from the Collection of William Swann and William Leazer 2014.133A-B

J.P. Kayser and Son, **Smoking Set**, designed 1901–1902, pewter. Gift from the Collection of William Swann and William Leazer 2014.143A-E



Karl Berghof, German, 1881–1967, J.P. Kayser and Son, **Chocolate Set with Tray**, designed 1903–1904, pewter. Gift from the Collection of William Swann and William Leazer 2014.148A-D

Karl Berghof, German, 1881–1967, J.P. Kayser and Son, **goblet**, designed 1903–1904, pewter. Gift from the Collection of William Swann and William Leazer 2014.149

Koloman Moser, Austrian, 1868–1918, Viennese Workshop, **Rose Mark wrapping paper**, about 1903, paper. Gift from the Collection of William Leazer 2014.157

Maria Likarz-Strauss, Austrian, 1893–1971, Viennese Workshop, **Advertising card (no. 682)**, 1912, color lithograph. Gift from the Collection of William Leazer 2014.163.4

Maria Likarz-Strauss, Austrian, 1893–1971, Viennese Workshop, **Advertising card (no.683)**, 1912, color lithograph. Gift from the Collection of William Leazer 2014.163.5

Maria Likarz-Strauss, Austrian, 1893–1971, Viennese Workshop, **Table Place Card (no. 688)**, 1912, color lithograph. Gift from the Collection of William Leazer 2014.163.1

Michael Powolny, Austrian, 1871–1954, Viennese Art Ceramic Workshop, **figure of a Putto**, about 1910, glazed earthenware. Gift from the Collection of William Swann and William Leazer 2014.154

R. Wallace & Sons Manufacturing Company, American, **tea strainer and drip**, 1929, sterling silver, Catalin. Gift of Jewel Stern in honor of Dr. Charles L. Venable and Martin Webb 2014.101A-B

Reed & Barton, American, **pitcher**, 1936, silverplate. Gift of Jewel Stern in honor of Charles L. Venable and Martin Webb 2014.100

Viennese Art Ceramic Workshop, **Pair of Lamps**, about 1910, glazed earthenware, glass, metal. Gift from the Collection of William Swann and William Leazer 2014.152.1-.2A-C

Viennese Art Ceramic Workshop, **vase**, about 1910–1920, glazed earthenware. Gift from the Collection of William Swann and William Leazer 2014.153

Viennese Workshop, **book mark**, 1904–1910, paper and ink. Gift from the Collection of William Leazer 2014.156

Viennese Workshop, **label for fabric**, 1910–1911, printed paper. Gift from the Collection of William Leazer 2014.156

Viennese Workshop, **wrapping paper**, 1903–1915, paper. Gift from the Collection of William Leazer 2014.160

Viennese Workshop, **wrapping paper**, 1903–1915, paper. Gift from the Collection of William Leazer 2014.161

Viennese Workshop, **wrapping paper**, about 1903, paper. Gift from the Collection of William Leazer 2014.162

**Design Arts**  
Achille Castiglioni, Italian, 1918–2002  
Pier G. Castiglioni, Italian, 1913–1968, **Snoopy**, originally designed in 1967, reintroduced in 2003, marble, steel, glass, enamel. Gift of Form + Function 2014.102A-C

Arne Jacobsen, Danish, 1902–1971, Stelton, Danish, **tea and coffee service**, aluminum. Gift of Martin K. Webb and Charles L. Venable 2014.192A.1-E

Ayala Serfaty, Israeli, 1962, **Memory, 2011**, 2011, glass rods, polymer membrane. Gift of Daniella Ohad, Maison Gerard, Ltd., New York, and the artist. 2015.14

Carl Auböck, Austrian, 1924–1993, Amboss, Austrian, **cutlery**, aluminum. Gift of Martin K. Webb and Charles L. Venable 2014.194A-E

Carl H. Pott, German, 1906–1985, **cutlery**, aluminum. Gift of Martin K. Webb and Charles L. Venable 2014.193A-E

Giovanni Ponti, Italian, 1891–1979, Christofle, French, **pair of Dolphin Candelabra**, Designed 1927, silverplate. Gift of Dr. and Mrs. Lawrence Goldberg 2014.186.1-.2A-C

Christopher Dresser, Scottish, 1834–1904, Hukin & Heath, English, Christopher Dresser, Scottish, 1834–1904, **Lidded Tureen with Ladle**, 1880, Electroplated silver, ebony. Gift of Dr. and Mrs. Lawrence Goldberg 2014.185A.1-B

Corning Inc., American, **lidded sauce pan**, Pyrex, metal. Gift of Martin K. Webb and Charles L. Venable 2014.203A-B

Dan Johnson, American, 1918–1979, Dan Johnson Studio, **Gazelle high-backed Lounge Chair**, 1955–56, walnut, and caning. Design Arts Society Fund 2014.99

George Nelson, American, 1908–1986, Herman Miller Furniture Company, American, **Home Office Desk model 4658**, 1946, Mahogany, leather, chrome-plated steel, and aluminum. Design Arts Society Fund 2014.98A-F

Kurt E. Christoffersen, Danish, 1926–1981, International Sterling Craft Associates, American, **centerpiece bowl**, 1955, sterling silver. Gift of Martin K. Webb and Charles L. Venable 2014.190

Isamu Noguchi, American, 1904–1988, **“Measured Time” Clock and Kitchen Timer**, 1932, bakelite, metal enameled metal, printed paper. Design Arts Society Fund 2015.13

Jens H. Quistgaard, Danish, 1919–2008, Dansk International Designs, Ltd., **lidded casserole dish**, about 1960, enameled metal. Gift of Martin K. Webb and Charles L. Venable 2014.189A-B

Lurette Van Arsdale Guild, American, 1898–1985, Kensington Ware, American, **gravy boat with tray**, aluminum. Gift of Martin K. Webb and Charles L. Venable 2014.200A-B

Kensington Ware, American, **pair of candlesticks**, aluminum. Gift of Martin K. Webb and Charles L. Venable 2014.197.1-.2

Kensington Ware, American, **salt and pepper shaker**, aluminum. Gift of Martin K. Webb and Charles L. Venable 2014.198.1-.2

Libbey Glass Company, American, **candleholders**, glass. Gift of Martin K. Webb and Charles L. Venable 2014.201.1-.2

Lurette Van Arsdale Guild, American, 1898–1985, Kensington Ware, American, **bowl**, aluminum. Gift of Martin K. Webb and Charles L. Venable 2014.199

Lurette Van Arsdale Guild, American, 1898–1985, Kensington Ware, American, **cake tray**, aluminum. Gift of Martin K. Webb and Charles L. Venable 2014.195

Lurette Van Arsdale Guild, American, 1898–1985, Kensington Ware, American, **candlestick**, aluminum. Gift of Martin K. Webb and Charles L. Venable 2014.197.2

Lurette Van Arsdale Guild, American, 1898–1985, Kensington Ware, American, **pair of candlesticks**, aluminum. Gift of Martin K. Webb and Charles L. Venable 2014.197.1-.2

Lurette Van Arsdale Guild, American, 1898–1985, Kensington Ware, American, **salt and pepper shaker**, aluminum. Gift of Martin K. Webb and Charles L. Venable 2014.198.1-.2

Maria Berntsen, Danish, 1961, Georg Jensen A/S, Danish, **Quack coffee service**, 2002, plastic and zinc. Gift of Georg Jensen 2014.188A-E.2

Oki Sato, Japanese, 1977, Nendo, Japanese, **Fadeout Chair**, 2009, wood (walnut), acrylic. Design Arts Society Purchase Fund, with funds provided by Mr. Trent Cowles, Marika Designs, and Dr. Shirley M. Mueller 2015.12

Richard Meier, American, 1934, Swid Powell Company, American, **bowl**, about 1980, silverplate. Gift of Martin K. Webb and Charles L. Venable 2014.191

Rockwell Kent, American, 1882–1971, Vernon Kilns, American, **Our America Ceramics**, 1937, ceramic. Gift of Martin K. Webb and Charles L. Venable 2014.196A-C

Wilhelm Wagenfeld, German, 1900–1990, Vereinigte Lausitzer Glaswerke AG, Saxon, **cubic stacking container**, about 1938, glass. Gift of Martin K. Webb and Charles L. Venable 2014.202A-J.2

**European**  
Corneille de Lyon, Netherlandish, 1500–1575, **Madame de Châtillon**, 1560–65, oil on wood. The Clowes Collection 2014.84

Corneille de Lyon, Netherlandish, 1500–1575, **Portrait of René du Puy du Fou**, about 1550, oil on wood. The Clowes Collection 2014.86

Domenico Tintoretto, Italian, 1560–1635, **Apollo and the Muses**, oil on canvas. The Clowes Collection 2014.82

Fouquet, Jean, French, 1420–1481, **Portrait of a Man**, about 1460, oil on wood. The Clowes Collection 2014.92

Fra Angelico, Italian, 1390–1455, **Nativity**, about 1423–1426, tempera and gold leaf on wood. The Clowes Collection 2014.89

Hieronymus Bosch, Netherlandish, 1450–1516, **Ecce Homo**, about 1510, oil and gold leaf on wood. The Clowes Collection 2014.88

After Hans Holbein, the younger, German, 1497–1543, **Portrait of the Artist**, 1542, oil on wood. The Clowes Collection 2014.90

Hans Holbein, the younger, German, 1497–1543, **Portrait of Unknown Lady**, about 1538, chalk and watercolor on tinted paper. The Clowes Collection 2014.91

Paolo Uccello, Italian, 1397–1475, **Portrait of a Young Man**, about 1430–35, oil on wood. The Clowes Collection 2014.87

Pere Vall, Spanish, 1380–1480, **St. Michael and St. Amador**, about 1405, tempera and gold on wood. The Clowes Collection 2014.83.1

Pere Vall, Spanish, 1380–1480, **St. Stephen and St. Mary Magdalene**, about 1400, tempera and gold on wood. The Clowes Collection 2014.83.2

Sandro Botticelli, Italian, 1444–1510, **Madonna and Child with St. John the Baptist**, about 1490, oil on wood. The Clowes Collection 2014.85

**Lilly House**  
Wayman Adams, American, 1883–1959, **Josiah Kirby Lilly III**, 1920–1925, oil on canvas. Gift of the Family of Ruth Lilly LH2014.4

Rookwood Pottery, American, **cigarette box**, 1922, porcelain, glaze. Bequest of Ruth Lilly LH2014.5A-B

Sèvres Porcelain Manufactory, French, **set of 12 plates**, 1849, porcelain, gilding. Bequest of Allen Whitehill Clowes LH2014.1.1-.12

Chinese, **lidded vase, flattened pear-shape form**, About 1770–1780, hard paste porcelain. Gift of Mrs. John Peacock in memory of her parents Mr. and Mrs. Theodore B. Griffith LH2014.3.1A-B

French, **pair of ormolu-mounted marquetry pedestals**, About 1900, marble, wood with ormolu mounts. Bequest of Allen Whitehill Clowes LH2014.2.1-.2

**Miller House**  
Alexander H. Girard, American, 1907–1993, **wooden chest**, About 1957, brass, wood. Gift of Margaret, Catherine, Elizabeth and Will Miller MH2010.594

Alexander H. Girard, Ecuadorian, 1907–1993, **Creche altarpiece with display box**, 18th century (box about 1959), painted wood, cloth, wood, silver, glass. Gift of Margaret, Catherine, Elizabeth and Will Miller MH2010.595A-B

Bjørn Wiinblad, Danish, Rosenthal GmbH, German, 1918, **set of 6 Quatre Couleurs candleholders**, About 1960, porcelain, gilding. Gift of Margaret, Catherine, Elizabeth and Will Miller MH2010.596.1-.6

Kaj Franck, Finnish, 1911–1989, Nuutajärvi Notsjö glassworks, Finnish, **Sargasso art glass bowl**, About 1966, glass. Gift of Margaret, Catherine, Elizabeth and Will Miller MH2010.597

Nanny Still, Finnish, 1926–2009, Riihimäen Lasi Oy, Finnish, **Saturnus vase**, 1961 (Designed), glass. Gift of Margaret, Catherine, Elizabeth and Will Miller MH2010.598

Giancarlo Girard, Italian, 1918–2006, **Adoration of the Magi**, 1957, ceramic, glaze. Gift of Margaret, Catherine, Elizabeth and Will Miller MH2010.599

Kaj Franck, Finnish, 1911–1989, Iittala, Finnish, **set of three Kartio tumblers**, 1958 (designed), glass. Gift of Margaret, Catherine, Elizabeth and Will Miller MH2010.600.1-.3



Maire Gullichsen, Finnish, 1907–1990, littala, Finnish, ***pitcher and five barrel-form tumblers***, 1950 (designed), glass. Gift of Margaret, Catherine, Elizabeth and Will Miller MH2010.601.1-.6

Kaj Franck, Finnish, 1911–1989, Nuutajärvi Notsjö glassworks, Finnish, ***group of 5 tumblers***, 1950–1959, glass. Gift of Margaret, Catherine, Elizabeth and Will Miller MH2010.602.1-.5

Timo Sarpaneva, Finnish, 1926–2006, littala, Finnish, ***glass pitcher***, 1956 (designed), glass. Gift of Margaret, Catherine, Elizabeth and Will Miller MH2010.603

French, ***Three Kings and Three Attendants***, 18th century, painted ceramic. Gift of Margaret, Catherine, Elizabeth and Will Miller MHS2010.513A-F

Greek, ***Holy Family Surrounded by Townspeople***, 1960–1980, painted pottery. Gift of Margaret, Catherine, Elizabeth and Will Miller MHS2010.514A-W

Ghanaian, ***Holy Family with Townspeople 12- piece crèche***, About 1972, clay. Gift of Margaret, Catherine, Elizabeth and Will Miller MHS2010.515A-L

Guatemalan, ***The Holy Family, animals and shepherds (crèche)***, 1960–1980, clay, slip. Gift of Margaret, Catherine, Elizabeth and Will Miller MHS2010.516A-Z

Mexican, ***Holy Family with Angel (crèche)***, 1960–1980, paint, pottery. Gift of Margaret, Catherine, Elizabeth and Will Miller MHS2010.517A-J

Italian, ***Murano glass Holy Family***, About 1996, glass, gilding. Gift of Margaret, Catherine, Elizabeth and Will Miller MHS2010.518A-C

Peruvian, ***16-piece set of pottery saints and other religious figures***, 1960–1980, paint, pottery. Gift of Margaret, Catherine, Elizabeth and Will Miller MHS2010.519A-P

Peruvian, ***Nativity with Wisemen, Angels and Townspeople***, 1960–1980, pottery. Gift of Margaret, Catherine, Elizabeth and Will Miller MHS2010.520A-P

German, ***Holy family in stable with wisemen, shepherds and star***, About 1996, wood, paint. Gift of Margaret, Catherine, Elizabeth and Will Miller MHS2010.521A-M

Peruvian, ***Nativity scene***, 1960–1980, paint, pottery. Gift of Margaret, Catherine, Elizabeth and Will Miller MHS2010.522

Peruvian, ***Nativity***, 1960–1980, terra cotta. Gift of Margaret, Catherine, Elizabeth and Will Miller MHS2010.523A-L

Unknown, ***group of 9 saucer champagne glasses***, 1950–1975, glass. Gift of Margaret, Catherine, Elizabeth and Will Miller MHS2010.524.1-.9

Indian, ***set of 8 lassi cups***, 1900–1950, brass. Gift of Margaret, Catherine, Elizabeth and Will Miller MHS2010.525.1-.8

Neiman Marcus, American, ***group of 8 gold and white demitasse cup and saucer sets***, 1960–1980, ceramic, gilding. Gift of Margaret, Catherine, Elizabeth and Will Miller MHS2010.526.1-.8

Sitterle Porcelain, American, ***pedestal bowl***, 1950–1975, porcelain. Gift of Margaret, Catherine, Elizabeth and Will Miller MHS2010.527

Unknown, ***pair of trifle bowls***, 1925–1950, glass. Gift of Margaret, Catherine, Elizabeth and Will Miller MHS2010.528.1-.2

American, ***cake stand***, 1900–1925, glass. Gift of Margaret, Catherine, Elizabeth and Will Miller MHS2010.529

American, ***covered bowl***, 1930–1950, glass. Gift of Margaret, Catherine, Elizabeth and Will Miller MHS2010.530A-B

Unknown, ***red glass bowl***, 1950–1975, glass. Gift of Margaret, Catherine, Elizabeth and Will Miller MHS2010.531

Unknown, ***green glass bowl***, 1950–1975, glass. Gift of Margaret, Catherine, Elizabeth and Will Miller MHS2010.532

Unknown, ***gravy pitcher with ladle***, 1975–2000, glass. Gift of Margaret, Catherine, Elizabeth and Will Miller MHS2010.533A-B

Unknown, ***bowl and underplate***, 1975–2000, glass, paint. Gift of Margaret, Catherine, Elizabeth and Will Miller MHS2010.534A-B

Czech, ***punch bowl***, 1875–1900, glass, enamel, gilding. Gift of Margaret, Catherine, Elizabeth and Will Miller MHS2010.535

Stromberg, Swedish, ***glass bowl***, 1940–1960, glass. Gift of Margaret, Catherine, Elizabeth and Will Miller MHS2010.536

Unknown, ***glass bowl***, 1975–2000, glass. Gift of Margaret, Catherine, Elizabeth and Will Miller MHS2010.537

Italian, ***glass bowl***, 1980–2000, glass. Gift of Margaret, Catherine, Elizabeth and Will Miller MHS2010.538

Austrian, ***bowl and underplate***, About 1900, porcelain, paint. Gift of Margaret, Catherine, Elizabeth and Will Miller MHS2010.539A-B

French, ***small bowl***, 1900–1925, bone china, paint, gilding. Gift of Margaret, Catherine, Elizabeth and Will Miller MHS2010.540

Herend Porcelain Manufactory Ltd., Hungarian, ***servng bowl***, 1975–2000, porcelain, paint. Gift of Margaret, Catherine, Elizabeth and Will Miller MHS2010.541

Japanese, ***luncheon set***, 1950–1975, porcelain, gilding. Gift of Margaret, Catherine, Elizabeth and Will Miller MHS2010.542.1-.28

French, ***servng dish with insert***, 1880–1900, porcelain, enamel, gilding. Gift of Margaret, Catherine, Elizabeth and Will Miller MHS2010.543A-B

Unknown, ***group of 9 glass salad plates***, 1975–2000, glass. Gift of Margaret, Catherine, Elizabeth and Will Miller MHS2010.544.1-.9

L'Escalier de Cristal, French, ***set of 12 gilt dinner plates***, 1825–1850, porcelain, gilding. Gift of Margaret, Catherine, Elizabeth and Will Miller MHS2010.545.1-.12

American, ***Last Supper glass dish***, 1975–2000, glass. Gift of Margaret, Catherine, Elizabeth and Will Miller MHS2010.546

Arcoroc, French, ***floral serving tray***, 1975–2000, glass. Gift of Margaret, Catherine, Elizabeth and Will Miller MHS2010.547

Baccarat, French, ***platter***, 1950–1975, glass. Gift of Margaret, Catherine, Elizabeth and Will Miller MHS2010.548

American, ***divided dish***, 1950–1975, glass. Gift of Margaret, Catherine, Elizabeth and Will Miller MHS2010.549

Japanese, ***bowl***, 1975–2000, porcelain. Gift of Margaret, Catherine, Elizabeth and Will Miller MHS2010.550

Japanese, ***bowl***, 1975–2000, porcelain. Gift of Margaret, Catherine, Elizabeth and Will Miller MHS2010.551

English, ***partial dessert service***, 1875–1900, ceramic, paint, gilding. Gift of Margaret, Catherine, Elizabeth and Will Miller MHS2010.552.1-.7

Westmoreland Glass Company, American, ***group of milk glass bowls and plates***, 1900–1925, milk glass. Gift of Margaret, Catherine, Elizabeth and Will Miller MHS2010.553.1-.29

Unknown, ***bowl***, 1975–2000, glass. Gift of Margaret, Catherine, Elizabeth and Will Miller MHS2010.554

Coalport, English, ***Pageant coffee service with bowl***, 1975–2000, bone china. Gift of Margaret, Catherine, Elizabeth and Will Miller MHS2010.555.1-.9

French, ***group of 11 opaline glass dishes***, About 1900, opaline glass. Gift of Margaret, Catherine, Elizabeth and Will Miller MHS2010.556.1-.11

French, ***cake stand***, 1925–1950, glass. Gift of Margaret, Catherine, Elizabeth and Will Miller MHS2010.557

American, ***pedestal dish***, 1950–1975, glass. Gift of Margaret, Catherine, Elizabeth and Will Miller MHS2010.558

Portuguese, ***Vestal Alobaca cake stand***, 1975–2000, earthenware, glaze. Gift of Margaret, Catherine, Elizabeth and Will Miller MHS2010.559

Crate and Barrel, American, ***set of 12 dinner plates***, 1980–2000, porcelain, gilding. Gift of Margaret, Catherine, Elizabeth and Will Miller MHS2010.560.1-.12

Puiforcat, French, ***set of 14 Hommage à G. Klimt dinner plates***, 1980–2000, porcelain, gilding, glaze. Gift of Margaret, Catherine, Elizabeth and Will Miller MHS2010.561.1-.14

Porzellan Manufaktur München GmbH, German, ***plate***, porcelain, glaze. Gift of Margaret, Catherine, Elizabeth and Will Miller MHS2010.562

French, ***tray***, 1900–1925, glass, gilding. Gift of Margaret, Catherine, Elizabeth and Will Miller MHS2010.563

French, ***group of 7 salad plates***, porcelain, paint. Gift of Margaret, Catherine, Elizabeth and Will Miller MHS2010.564.1-.7

Chamart, American, ***group of 15 daisy plates***, 1975–2000, porcelain, glaze. Gift of Margaret, Catherine, Elizabeth and Will Miller MHS2010.565.1-.15

French, ***two bowls***, porcelain. Gift of Margaret, Catherine, Elizabeth and Will Miller MHS2010.566.1-.2

Unknown, ***group of 13 salad plates***, 1975–2000, glass. Gift of Margaret, Catherine, Elizabeth and Will Miller MHS2010.567.1-.13

French, ***group of 13 pink salad plates***, 1900–1950, glass, gilding. Gift of Margaret, Catherine, Elizabeth and Will Miller MHS2010.568.1-.13

French, ***set of 12 salad plates***, 1900–1950, glass. Gift of Margaret, Catherine, Elizabeth and Will Miller MHS2010.569.1-.12

French, ***set of 6 salad plates***, 1925–1950, glass, gilding. Gift of Margaret, Catherine, Elizabeth and Will Miller MHS2010.570.1-.6

Unknown, ***set of 10 finger bowls***, 1900–1925, glass. Gift of Margaret, Catherine, Elizabeth and Will Miller MHS2010.571.1-.10

Unknown, ***group of 14 finger bowls***, 1900–1925, glass. Gift of Margaret, Catherine, Elizabeth and Will Miller MHS2010.572.1-.14

Carlton Ware, English, ***pitcher***, 1920–1930, earthenware, paint, gilding. Gift of Margaret, Catherine, Elizabeth and Will Miller MHS2010.573

Italian, ***teapot with lid***, 1980–2000, earthenware, glaze. Gift of Margaret, Catherine, Elizabeth and Will Miller MHS2010.574A-B

Italian, ***teapot with lid***, 1980–2000, earthenware, glaze. Gift of Margaret, Catherine, Elizabeth and Will Miller MHS2010.575A-B

Chinese, ***Easter teapot with lid***, 1980–2000, earthenware, glaze. Gift of Margaret, Catherine, Elizabeth and Will Miller MHS2010.576A-B

Portuguese, ***pink cabbage teapot with lid***, 1980–2000, earthenware, glaze. Gift of Margaret, Catherine, Elizabeth and Will Miller MHS2010.577A-B

American, ***pedestal dish***, About 1900, glass. Gift of Margaret, Catherine, Elizabeth and Will Miller MHS2010.578

Unknown, ***burl wooden bowl***, 1900–1950, wood. Gift of Margaret, Catherine, Elizabeth and Will Miller MHS2010.579

Wade Ceramics Ltd., English, ***Conservatory teapot with lid***, 1980–2000, earthenware, paint. Gift of Margaret, Catherine, Elizabeth and Will Miller MHS2010.580A-B

Wade Ceramics Ltd., English, ***Pub teapot with lid***, 1980–2000, earthenware, paint. Gift of Margaret, Catherine, Elizabeth and Will Miller MHS2010.581A-B

Portuguese, ***orange-form teapot with lid***, 1980–2000, earthenware, paint. Gift of Margaret, Catherine, Elizabeth and Will Miller MHS2010.582A-B

Williams-Sonoma, ***teapot with infuser***, 1980–2000, glaze, porcelain. Gift of Margaret, Catherine, Elizabeth and Will Miller MHS2010.583A-C

Italian, ***covered dish***, 1980–2000, earthenware, glaze. Gift of Margaret, Catherine, Elizabeth and Will Miller MHS2010.584A-B



Pottery Barn, Inc., American, **teapot and cup set**, 1980–2000, earthenware, glaze. Gift of Margaret, Catherine, Elizabeth and Will Miller MHS2010.585A-C

Unknown, **bell pepper-form teapot with lid**, 1980–2000, earthenware, glaze. Gift of Margaret, Catherine, Elizabeth and Will Miller MHS2010.586A-B

Czech, **set of five finger bowls**, 1900–1925, glass. Gift of Margaret, Catherine, Elizabeth and Will Miller MHS2010.587.1-.5

Portieux Vallerysthal, French, **set of three goblets**, 1950–1975, glass. Gift of Margaret, Catherine, Elizabeth and Will Miller MHS2010.588.1-.3

Unknown, **group of five goblets**, 1975–2000, glass. Gift of Margaret, Catherine, Elizabeth and Will Miller MHS2010.589.1-.5

French, **footed bowl**, 1900–1950, glass. Gift of Margaret, Catherine, Elizabeth and Will Miller MHS2010.590

Portieux Vallerysthal, French, **set of 4 cordial cups**, 1950–1975, glass. Gift of Margaret, Catherine, Elizabeth and Will Miller MHS2010.591.1-.4

French, **pair of small tumblers**, 1950–1975, glass. Gift of Margaret, Catherine, Elizabeth and Will Miller MHS2010.592.1-.2

French, **pair of tumblers**, 1950–1975, glass. Gift of Margaret, Catherine, Elizabeth and Will Miller MHS2010.593.1-.2

La Rochère, French, **set of 3 bee tumblers**, 1980–2000, glass. Gift of Margaret, Catherine, Elizabeth and Will Miller MHS2010.594.1-.3

Unknown, **set of 4 frosted glass tumblers**, 1975–2000, glass. Gift of Margaret, Catherine, Elizabeth and Will Miller MHS2010.595.1-.4

Unknown, **group of 7 frosted glass tumblers**, 1975–2000, glass. Gift of Margaret, Catherine, Elizabeth and Will Miller MHS2010.596.1-.7

French, **tumbler**, 1875–1900, glass. Gift of Margaret, Catherine, Elizabeth and Will Miller MHS2010.597

French, **goblet**, 1880–1900, opaline glass, gilding. Gift of Margaret, Catherine, Elizabeth and Will Miller MHS2010.598

French, **goblet**, 1880–1900, opaline glass, gilding. Gift of Margaret, Catherine, Elizabeth and Will Miller MHS2010.599

French, **goblet**, 1880–1900, opaline glass, gilding. Gift of Margaret, Catherine, Elizabeth and Will Miller MHS2010.600

French, **goblet**, 1880–1900, opaline glass, gilding. Gift of Margaret, Catherine, Elizabeth and Will Miller MHS2010.601

Unknown, **set of ten tall frosted tumblers**, 1950–1975, glass. Gift of Margaret, Catherine, Elizabeth and Will Miller MHS2010.602.1-.10

Unknown, **set of 12 tapered parfait glasses**, 1980–2000, glass. Gift of Margaret, Catherine, Elizabeth and Will Miller MHS2010.603.1-.12

Williams-Sonoma, **set of 4 footed tumblers**, 1980–2000, plastic. Gift of Margaret, Catherine, Elizabeth and Will Miller MHS2010.604.1-.4

Unknown, **frosted glass pitcher**, 1975–2000, glass. Gift of Margaret, Catherine, Elizabeth and Will Miller MHS2010.605

Perthshire, Scottish, **group of 5 millefiori-base tumblers**, 1980–2000, glass. Gift of Margaret, Catherine, Elizabeth and Will Miller MHS2010.606.1-.5

French, **tumbler**, 1875–1900, glass. Gift of Margaret, Catherine, Elizabeth and Will Miller MHS2010.607

Czech, **footed tumbler**, 1860–1880, opaline glass, gilding. Gift of Margaret, Catherine, Elizabeth and Will Miller MHS2010.608

Czech, **footed tumbler**, 1850–1875, glass, enamel, gilding. Gift of Margaret, Catherine, Elizabeth and Will Miller MHS2010.609

Czech, **footed tumbler**, 1880–1900, opaline glass, paint, gilding. Gift of Margaret, Catherine, Elizabeth and Will Miller MHS2010.610

Czech, **footed tumbler**, 1860–1880, opaline glass, paint, gilding. Gift of Margaret, Catherine, Elizabeth and Will Miller MHS2010.611

Czech, **footed tumbler**, 1860–1880, opaline glass, paint, gilding. Gift of Margaret, Catherine, Elizabeth and Will Miller MHS2010.612

Czech, **footed tumbler**, 1860–1880, opaline glass, paint, gilding. Gift of Margaret, Catherine, Elizabeth and Will Miller MHS2010.613

Czech, **footed tumbler**, 1860–1880, opaline glass, paint, gilding. Gift of Margaret, Catherine, Elizabeth and Will Miller MHS2010.615

Czech, **footed tumbler**, 1860–1880, opaline glass, paint, gilding. Gift of Margaret, Catherine, Elizabeth and Will Miller MHS2010.616

Unknown, **group of 10 champagne saucers**, 1925–1950, glass. Gift of Margaret, Catherine, Elizabeth and Will Miller MHS2010.617.1-.10

Baccarat, French, **five brandy snifters, Perfection pattern**, 1950–1975, glass. Gift of Margaret, Catherine, Elizabeth and Will Miller MHS2010.618.1-.5

American, **eight wine glasses**, 1950–1975, glass. Gift of Margaret, Catherine, Elizabeth and Will Miller MHS2010.619.1-.8

Baccarat, French, **three cordial glasses, Perfection pattern**, 1950–1975, glass. Gift of Margaret, Catherine, Elizabeth and Will Miller MHS2010.620.1-.3

Baccarat, French, **six sherry glasses, Perfection pattern**, 1950–1975, glass. Gift of Margaret, Catherine, Elizabeth and Will Miller MHS2010.621.1-.6

Baccarat, French, **nine hock glasses, Perfection pattern**, 1950–1975, glass. Gift of Margaret, Catherine, Elizabeth and Will Miller MHS2010.622.1-.9

Unknown, **salt shaker**, 1950–1975, glass, plastic. Gift of Margaret, Catherine, Elizabeth and Will Miller MHS2010.623

Baccarat, French, **23 champagne glasses, Perfection Pattern**, 1950–1975, glass. Gift of Margaret, Catherine, Elizabeth and Will Miller MHS2010.624.1-.23

French, **soap dish**, 1950–1975, glass, metal, gilding. Gift of Margaret, Catherine, Elizabeth and Will Miller MHS2010.625

French, **soap dish**, 1950–1975, glass, metal, gilding. Gift of Margaret, Catherine, Elizabeth and Will Miller MHS2010.626

American, **pair of mugs**, 1975–2000, glass. Gift of Margaret, Catherine, Elizabeth and Will Miller MHS2010.627.1-.2

American, **twelve green and gold tumblers**, 1900–1925, glass, gilding. Gift of Margaret, Catherine, Elizabeth and Will Miller MHS2010.628.1-.12

Edinburgh Crystal, Scottish, **Cummins 75th Anniversary Pitcher**, About 1995, glass. Gift of Margaret, Catherine, Elizabeth and Will Miller MHS2010.629

Unknown, **pitcher**, 1975–2000, glass. Gift of Margaret, Catherine, Elizabeth and Will Miller MHS2010.630

American, **cocktail pitcher**, 1950–1975, glass. Gift of Margaret, Catherine, Elizabeth and Will Miller MHS2010.631

Unknown, **pitcher**, glass. Gift of Margaret, Catherine, Elizabeth and Will Miller MHS2010.632

Unknown, **pitcher**, 1950–1975, glass. Gift of Margaret, Catherine, Elizabeth and Will Miller MHS2010.633

American, **tumbler**, 1900–1925, glass. Gift of Margaret, Catherine, Elizabeth and Will Miller MHS2010.634

Guzzini S.p.A., Italian, **four tumblers**, 1975–2000, plastic. Gift of Margaret, Catherine, Elizabeth and Will Miller MHS2010.635.1-.4

American, **five sherbet dishes**, 1975–2000, glass. Gift of Margaret, Catherine, Elizabeth and Will Miller MHS2010.636.1-.5

Unknown, **pair of rib optic tumblers**, 1975–2000, glass. Gift of Margaret, Catherine, Elizabeth and Will Miller MHS2010.637.1-.2

Unknown, **five tumblers**, 1950–1975, glass. Gift of Margaret, Catherine, Elizabeth and Will Miller MHS2010.638.1-.5

American, **five starburst shot glasses**, 1950–1975, glass. Gift of Margaret, Catherine, Elizabeth and Will Miller MHS2010.639.1-.5

Unknown, **six cordial glasses**, 1950–1975, glass. Gift of Margaret, Catherine, Elizabeth and Will Miller MHS2010.640.1-.6

Unknown, **eight cordial glasses**, 1950–1975, glass. Gift of Margaret, Catherine, Elizabeth and Will Miller MHS2010.641.1-.8

French, **finial**, 1900–1950, glass. Gift of Margaret, Catherine, Elizabeth and Will Miller MHS2010.642

Unknown, **pitcher**, 1975–2000, glass. Gift of Margaret, Catherine, Elizabeth and Will Miller MHS2010.643

Unknown, **jug**, 1985–2000, glaze, earthenware. Gift of Margaret, Catherine, Elizabeth and Will Miller MHS2010.644

Unknown, **seven wine glasses**, 1950–1975, glass. Gift of Margaret, Catherine, Elizabeth and Will Miller MHS2010.645.1-.7

Unknown, **nine water goblets**, 1950–1975, glass. Gift of Margaret, Catherine, Elizabeth and Will Miller MHS2010.646.1-.9

Unknown, **eight wine glasses**, 1975–2000, glass. Gift of Margaret, Catherine, Elizabeth and Will Miller MHS2010.647.1-.8

Unknown, **seven drinking glasses**, 1975–2000, glass. Gift of Margaret, Catherine, Elizabeth and Will Miller MHS2010.648.1-.7

French, **twelve green stemmed hock glasses**, 1975–2000, glass. Gift of Margaret, Catherine, Elizabeth and Will Miller MHS2010.649.1-.12

French, **covered jar**, 1900–1950, glass. Gift of Margaret, Catherine, Elizabeth and Will Miller MHS2010.650A-B

French, **covered jar**, 1900–1950, glass. Gift of Margaret, Catherine, Elizabeth and Will Miller MHS2010.651A-B

French, **bottle with stopper**, 1900–1925, glass. Gift of Margaret, Catherine, Elizabeth and Will Miller MHS2010.652A-B

French, **small pitcher**, 1900–1950, glass. Gift of Margaret, Catherine, Elizabeth and Will Miller MHS2010.653

French, **set of four pots de crème**, 1900–1950, glass. Gift of Margaret, Catherine, Elizabeth and Will Miller MHS2010.654.1-.4

French, **pedestal bowl**, 1900–1925, glass, gilding. Gift of Margaret, Catherine, Elizabeth and Will Miller MHS2010.655

French, **goblet**, 1900–1925, glass, gilding. Gift of Margaret, Catherine, Elizabeth and Will Miller MHS2010.656

French, **pair of candlesticks**, 1900–1925, glass. Gift of Margaret, Catherine, Elizabeth and Will Miller MHS2010.657.1-.2

French, **dish**, 1900–1925, glass. Gift of Margaret, Catherine, Elizabeth and Will Miller MHS2010.658

Unknown, **pair of low candleholders**, 1900–1925, glass. Gift of Margaret, Catherine, Elizabeth and Will Miller MHS2010.659.1-.2

French, **large goblet**, 1950–1975, glass. Gift of Margaret, Catherine, Elizabeth and Will Miller MHS2010.660

French, **bottle with stopper**, 1900–1950, glass. Gift of Margaret, Catherine, Elizabeth and Will Miller MHS2010.661A-B

Unknown, **vase**, 1950–1975, glass. Gift of Margaret, Catherine, Elizabeth and Will Miller MHS2010.662

Unknown, **bowl**, 1975–2000, glass. Gift of Margaret, Catherine, Elizabeth and Will Miller MHS2010.663

Czech, **goblet**, 1850–1875, glass, gilding. Gift of Margaret, Catherine, Elizabeth and Will Miller MHS2010.664



Unknown, **small wine glass**, About 1950, glass. Gift of Margaret, Catherine, Elizabeth and Will Miller MHS2010.665

Austrian, **champagne glass**, About 1900, glass, enamel, gilding. Gift of Margaret, Catherine, Elizabeth and Will Miller MHS2010.666

Austrian, **champagne glass**, About 1900, glass, gilding. Gift of Margaret, Catherine, Elizabeth and Will Miller MHS2010.667

Austrian, **wine glass**, About 1900, glass, enamel, gilding. Gift of Margaret, Catherine, Elizabeth and Will Miller MHS2010.668

French, **cup**, 1900–1925, glass. Gift of Margaret, Catherine, Elizabeth and Will Miller MHS2010.669

French, **jardiniere**, 1900–1925, glass. Gift of Margaret, Catherine, Elizabeth and Will Miller MHS2010.670

Mary A. Hampton, **pot**, 1960–1980, slip, earthenware. Gift of Margaret, Catherine, Elizabeth and Will Miller MHS2010.671

Unknown, **pot**, 1996, earthenware, glaze. Gift of Margaret, Catherine, Elizabeth and Will Miller MHS2010.672

Leonore Doskow, Inc., American, **set of 10 monogram placecard holders**, 1950–1975, sterling silver. Gift of Margaret, Catherine, Elizabeth and Will Miller MHS2010.673.1-.10

Astrid Sampe, Swedish, 1909–2002, Åry Trays, Swedish, **tray**, 1960–1980, wood. Gift of Margaret, Catherine, Elizabeth and Will Miller MHS2010.674

Georges Boyer, French, **assembled white porcelain dinner service**, About 1970, porcelain. Gift of Margaret, Catherine, Elizabeth and Will Miller MHS2010.675.1-.40

Puiforcat, French, **monogrammed dinner service, 1930 pattern**, Designed 1930, porcelain, silvering, gilding. Gift of Margaret, Catherine, Elizabeth and Will Miller MHS2010.676.1-.43

Rosenthal GmbH, German, **set of 12 Electra dinner plates**, 1950–1975, bone china, glaze, gilding. Gift of Margaret, Catherine, Elizabeth and Will Miller MHS2010.677.1.1-.12

Unknown, **set of 4 tumblers with red rims**, 1980–2000, glass. Gift of Margaret, Catherine, Elizabeth and Will Miller MHS2010.678.1-.4

Unknown, **set of 4 tumblers with orange rims**, 1980–2000, glass. Gift of Margaret, Catherine, Elizabeth and Will Miller MHS2010.678.5-.8

Unknown, **set of 4 tumblers with yellow rims**, 1980–2000, glass. Gift of Margaret, Catherine, Elizabeth and Will Miller MHS2010.678.9-.12

Baccarat, French, **set of 6 wine glasses, Perfection pattern**, 1950–1975, glass. Gift of Margaret, Catherine, Elizabeth and Will Miller MHS2010.679.1-.6

Unknown, **large vase**, About 1960, glass. Gift of Margaret, Catherine, Elizabeth and Will Miller MHS2010.680

Czech, **footed tumbler**, 1860–1880, opaline glass, paint, gilding. Gift of Margaret, Catherine, Elizabeth and Will Miller MHS2010.614

**Prints, Drawings, and Photographs**  
Alfonso A. Ossorio, American, 1916, **Quem quaeritis? (Whom do you seek?)**, 1984, etching and aquatint on off-white wove paper. Gift of Dr. Steven Conant in memory of Dr. Thomas Kuebler 2015.8

Andy Goldsworthy, British, 1956, **Lowther Foothills, Black Hill**, 1990–1991, melted snow and earth on off-white wove paper. Gift of Dr. Steven Conant in memory of Dr. Thomas Kuebler 2015.11

Chakaia Booker, American, 1953, **Untitled**, 2011, woodcut on chine colle on white Somerset paper. Gift of Dr. Steven Conant in memory of Dr. Thomas Kuebler 2015.7

Elizabeth Curtis, American, 1873–1946, **Pont Croix, Brittany**, 1914, watercolor over pencil on off-white paper. Gift of Dr. Steven Conant 2014.209

Florence Henri, Swiss, 1893–1982, **Seated Nude**, 1937, heliogravure. Gift of Dr. Steven Conant 2014.208

Georg Kolbe, German, 1877–1947, **Standing Female Nude**, about 1928, drypoint on cream wove paper. Gift of John P.Antonelli 2015.1

George Graham, English, 1881–1949, **Landscape with Hills and Stone Fences**, about 1930, watercolor on oatmeal paper. Gift of John P. Antonelli 2014.204

George Graham, English, 1881–1949, **Mountainous Landscape with Cloudy Sky**, about 1930, watercolor on oatmeal paper. Gift of John P. Antonelli 2014.205

Henri Laurens, French, 1885–1954, **Femme allonge au bras levé (Reclining Woman with Raised Arm)**, 1950, color lithograph. Gift of Dr. Steven Conant 2014.207

Johan B. Jongkind, Dutch, 1819–1891, **Cahier de six eaux-fortes, vues de Hollande**, 1862, etching on green-gray wove paper. Gift of INB Financial Corporation by exchange 2014.109.1-.8

Kyu-Baik Hwang, Korean, 1932, **Legend-Bo**, about 1969, color collagraph and soft-ground etching. Gift of Dr. Steven Conant 2014.206

Leo Gestel, Dutch, 1881–1941, **Altenberg (Ertsgebergte)**, 1923, lithograph. Gift of Dr. Steven Conant 2014.21

Leo Gestel, Dutch, 1881–1941, **Head**, 1923, lithograph. Gift of Dr. Steven Conant 2014.211

Massimiliano Bertozzi, Italian, **Temple of Vesta at Tivoli**, 19th century, watercolor over pencil on off-white wove paper. Gift of the Cain Foundation in memory of Harriet Greathouse Cain 2014.212

May Gearhart, American, 1872–1951, **Chinese Doll**, about 1930, color etching, aquatint and soft-ground etching on cream wove paper. Gift of Dr. Steven Conant in memory of Dr. Thomas Kuebler 2015.9

Zeno Hodge, American, 1896–0, **Academy Figure - Nurse**, 1914–1917, charcoal on cream wove paper. Gift of John and Gaye Rardon 2014.11

Zeno Hodge, American, 1896–0, **Academy Figure - Woman in Hat (recto), Female Nude (verso)**, 1914–1917, charcoal on cream wove paper. Gift of John and Gaye Rardon 2014.111

Zeno Hodge, American, 1896–0, **Academy Figure – Woman in Profile (Mabel Melhorn)**, 1914–1917, charcoal on cream wove paper. Gift of John and Gaye Rardon 2014.112

**Textile and Fashion Arts**  
André. Courrèges, French, 1923, **Dress**, 1968, wool. Purchased with funds donated by Lorene Burkhart to the Fashion Arts Society Acquisition Fund 2014.104A-B

Comme des Garçons, Japanese, **Day Ensemble (Bodice & Skirt)**, Autumn–Winter 2003, wool, mohair, knit. Purchased with funds donated by Lorene Burkhart to the Fashion Arts Society Acquisition Fund 2014.105A-B

Comme des Garçons, Japanese, **Ensemble (Bodice & Skirt) from “Bump” Collection**, Spring/Summer 1997, polyester. Fashion Arts Society Acquisition Fund, Deaccessioned Textiles Fund by exchange, purchased with funds provided by F. Timothy and Nancy Nagler 2014.106A-B

Comme des Garçons, Japanese, **Ensemble (Bodice & Trousers)**, Autumn/ Winter2007–2008, polyester. Fashion Arts Society Acquisition Fund, purchased with funds provided by Tina Pasquinelli and Gary Jacobson 2014.107A-B

Comme des Garçons, Japanese, **Hat (Bunny Ears)**, Autumn–Winter 2007, wool, elastic band, plastic comb, metal wire. Fashion Arts Society Acquisition Fund, purchased with funds provided by Tina Pasquinelli and Gary Jacobson 2015.4

Issey Miyake, Japanese, 1938, **Dress**, Fall/ Winter 2014, triacetate, polyester. Gift of Ann M. Stack 2015.5

Junya Watanabe, Japanese, 1961, **Day Ensemble (Bodice & Skirt)**, Autumn–Winter 2003, wool, mohair, knit. Purchased with funds donated by Lorene Burkhart to the Fashion Arts Society Acquisition Fund 2014.105A-B

Marie D. Webster, American, 1859–1956, **Poppy (quilt)**, 1909, linen appliqué on cotton, and quilted. Webster Collection, Gift of Rosalind Webster Perry 2014.108

Rei Kawakubo, Japanese, 1942, **Ensemble (Bodice & Skirt) from “Bump” Collection**, Spring/Summer 1997, polyester. Fashion Arts Society Acquisition Fund, Deaccessioned Textiles Fund by exchange, purchased with funds provided by F. Timothy and Nancy Nagler 2014.106A-B

Rei Kawakubo, Japanese, 1942, **Ensemble (Bodice & Trousers)**, Autumn/ Winter2007–2008, polyester. Fashion Arts Society Acquisition Fund, purchased with funds provided by Tina Pasquinelli and Gary Jacobson 2014.107A-B

Stephen Jones, English, 1957, **Hat (Bunny Ears)**, Autumn–Winter 2007, wool, elastic band, plastic comb, metal wire. Fashion Arts Society Acquisition Fund, purchased with funds provided by Tina Pasquinelli and Gary Jacobson 2015.4

Yoshiyuki Miyamae, Japanese, 1976, **Dress**, Fall/ Winter 2014, triacetate, polyester. Gift of Ann M. Stack 2015.5

Yves Saint Laurent, French, 1936–2008, **Tunic, ‘Safari’ Collection and Belt**, 1968, cotton. Fashion Arts Society Acquisition Fund 2015.1A-B

Azerbaijan, **Panel**, early 1900s, cotton embroidered with silk. Gift of Dorothy Stites Alig 2014.96

Indonesia, **woman's hip wrapper (sarong)**, early 1900s, silk batik. Gift of Dorothy Stites Alig 2014.93

Indonesia, **woman's hip wrapper (sarong)**, early 1900s, cotton batik. Gift of Dorothy Stites Alig 2014.94

Iran, **hanging or cover**, early 1900s, wool embroidered with silk and cotton. Gift of Dorothy Stites Alig 2014.95

Mali, **Hunter's tunic**, mid 1900s, cotton, leather, cowrie shells, mirrors, fur. Anonymous IV Art Fund, Bequest of William O. Bates by exchange 2015.3

**Hunter's tunic**, mid 1900s, cotton, leather, cowrie shells, mirrors, fur. Anonymous IV Art Fund, Bequest of William O. Bates by exchange 2015.3

**Medicine Man's Ritual Tunic, kheghebchio**, mid 1900s, plant fiber, burlap, pods, shells, wood, metal, feathers. Anonymous IV Art Fund 2015.2



# FINANCIAL STATEMENT

**Consolidated Statements of Financial Position** June 30, 2015 and 2014  
(in thousands)

<b>Assets</b>	<b>2015</b>	<b>2014</b>
Cash	\$ 1,737	\$ 3,595
Accounts receivable	520	367
Contributions receivable, net	3,012	3,083
Government grant reimbursements receivable	183	69
Inventories	626	571
Prepaid expenses	376	1,726
Investments	371,326	381,747
Estate notes and charitable lead trusts	13,791	13,620
Unamortized bond issue costs	546	592
Library accessions	1,120	1,100
Property and equipment	108,338	113,081
Collections—Note 1	—	—
<b>Total assets</b>	<b>\$ 501,575</b>	<b>\$ 519,551</b>
<b>Liabilities</b>		
Accounts payable	\$ 789	\$ 861
Accrued salaries, wages and employee benefits	1,166	1,063
Deferred revenue	997	503
Accrued pension expense	1,035	2,652
Fair value of interest rate swap agreements	3,202	3,540
Tax-exempt bonds payable (including bond premium of \$1,847 in 2015 and \$1,939 in 2014)	121,002	122,104
Other Liabilities	1,481	1,441
<b>Total liabilities</b>	<b>129,672</b>	<b>132,164</b>
<b>Net Assets</b>		
Unrestricted	106,017	113,552
Temporarily restricted	129,049	139,452
Permanently restricted	136,837	134,383
<b>Total net assets</b>	<b>371,903</b>	<b>387,387</b>
<b>Total Liabilities and net assets</b>	<b>\$ 501,575</b>	<b>\$ 519,551</b>

**Consolidated Statements of Activities** June 30, 2015  
(in thousands)

<b>Revenue, Gains and Other Support</b>	<b>Unrestricted</b>	<b>Temporarily Restricted</b>	<b>Permanently Restricted</b>	<b>Total</b>
Gifts, grants and memberships				
Annual giving, including membership	\$2,393	\$ —	\$ —	\$ 2,393
Other contributions	2,385	1,779	1,854	6,018
Government grants	171	92	—	263
Revenue from activities				
Admissions, fees and sales	2,689	50	—	2,739
Investment return designated for current operations and art acquisitions	8,999	14,051	—	23,050
	16,637	15,972	1,854	34,463
Net assets released from restrictions	14,430	(14,430)	—	—
<b>Total revenue, gains and other support</b>	<b>31,067</b>	<b>1,542</b>	<b>1,854</b>	<b>34,463</b>
<b>Expenses</b>				
Curatorial	7,903	—	—	7,903
Educational	5,854	—	—	5,854
Horticultural	1,587	—	—	1,587
Museum Stores	1,731	—	—	1,731
Management and general	2,014	—	—	2,014
Fundraising	1,879	—	—	1,879
<b>Total expenses</b>	<b>20,968</b>	<b>—</b>	<b>—</b>	<b>20,968</b>
<b>Changes in Net Assets Before Depreciation and Interest</b>	<b>10,099</b>	<b>1,542</b>	<b>1,854</b>	<b>13,495</b>
Depreciation	6,409	—	—	6,409
Interest	3,541	—	—	3,541
<b>Total depreciation and interest</b>	<b>9,950</b>	<b>—</b>	<b>—</b>	<b>9,950</b>
<b>Change in Net Assets From Operations</b>	<b>149</b>	<b>1,542</b>	<b>1,854</b>	<b>3,545</b>
<b>Nonoperating Revenue (Expense)</b>				
Investment return greater than amounts designated for current operations and art acquisitions	(7,903)	(8,930)	—	(16,833)
Other transfers	—	(600)	600	—
Changes in projected benefit obligation arising during the period	259	—	—	259
Amortization included in net periodic pension cost	(171)	—	—	(171)
Change in fair value of interest rate swap agreements	338	—	—	338
Loss on refinancing	—	—	—	—
Change in split interest agreements	12	(400)	—	(388)
Proceeds from sales of art	—	124	—	124
Purchases of art	(2,358)	—	—	(2,358)
Net assets released from restriction—art acquisition	2,139	(2,139)	—	—
<b>Change in Net Assets</b>	<b>(7,535)</b>	<b>(10,403)</b>	<b>2,454</b>	<b>(15,484)</b>
<b>Net Assets, Beginning of Year</b>	<b>113,552</b>	<b>139,452</b>	<b>134,383</b>	<b>387,387</b>
<b>Net Assets, End of Year</b>	<b>\$ 106,017</b>	<b>\$ 129,049</b>	<b>\$ 136,837</b>	<b>\$ 371,903</b>



We extend our gratitude to each donor who made a gift to the IMA during our fiscal year, July 1, 2014–June 30, 2015. Second Century Society, Patron Circle, and Annual Fund contributors provide vital support for the IMA's daily operations, from art conservation to educational and public programs to the maintenance of the Gardens, Park, and historic properties. Donors of works of art foster new understanding of the permanent collection while increasing its quality and scope. As IMA corporate sponsors and grantors address the special project needs of the present, members of the Legacy Circle ensure the future of the IMA as a preeminent institution by including it in their estate plans.

## SECOND CENTURY SOCIETY AND PATRON CIRCLE

### Lilly Circle (\$50,000 and greater)

Mr. Randolph H. Deer  
Mr. and Mrs. Eli Lilly II  
Dr. and Mrs. William W. McCutchen Jr.  
Mr. and Mrs. Peter Nicholas  
Myrta Pulliam  
Richard D. Wood

### Clowes Circle (\$25,000 to \$49,999)

Tom and Nora Hiatt  
Kay F. Koch  
June M. McCormack  
Steve and Livia Russell  
Chris and Ann M. Stack  
Dr. Charles L. Venable and Mr. Martin K. Webb

### Chairman's Circle (\$10,000 to \$24,999)

Lori Efroymson Aguilera and Sergio Aguilera  
Bob and Toni Bader  
Gay and Tony Barclay  
Leonard and Kathryn Betley  
George and Mary Clare Broadbent  
Mr. and Mrs. Trent Cowles  
Christel DeHaan  
Mr. and Mrs. David N. Eskenazi  
Jane Fortune and Robert Hesse  
Penny and Russell Fortune III  
Kent Hawryluk  
Mr. and Mrs. Rick L. Johnson Jr.  
Mr. and Mrs. David W. Knall  
Mr. and Mrs. Michael Kubacki  
James E. and Patricia J. LaCrosse  
Dr. and Mrs. John C. Lechleiter  
Ms. Susanne M. McAlister and Mr. Jerry Greene  
Lynne Maguire and Will Miller  
E. Kirk McKinney Jr.\*  
Elie, Weber and Emaline Morse  
Drs. Shirley M. and Thomas M. Mueller  
Mr. and Mrs. Ersal Ozdemir  
Andrew and Jane Paine  
Benjamin A. Pecar and Leslie D. Thompson

Derica and Robin Rice  
Michael Robertson and Christopher Slapak

Marya and Tony Rose  
Mr. and Mrs.\* George A. Rubin  
Mr. and Mrs. Jonathan Russell  
Charles and Peggy Sutphin  
Jeff and Heather Smulyan  
Marianne Williams Tobias  
Ambassador and Mrs. Randall L. Tobias  
Dr. and Mrs. Eugene D. Van Hove

### President's Circle (\$5,000 to \$9,999)

Dan and Kate Appel  
Sarah C. Barney  
Jerry H. and Barbara J. Burris Foundation  
Daniel and Kathryn Cantor  
Ms. Jane H. Conley  
Ms. Margaret Coyle  
Mrs. Jack Dustman  
Edgar and Dorothy Fehnel  
Mr. and Mrs. Charles E. Golden  
Mr. Matthew R. Gutwein and Ms. Jane Henegar  
Dr. Howard Harris and Mrs. Anita Harris  
Mr. and Mrs. Allan B. Hubbard  
Ann H. Hunt  
Catharine D. Lichtenauer  
Michael K. and Patricia P. McCrory  
Nancy and Rob McMillan  
Lawrence and Ann O'Connor  
Kathi and Bob Postlethwait  
Dr. and Mrs. John G. Rapp  
Mr. and Mrs. Paul D. Reising  
Gary and Phyllis Schahet  
Mr. and Mrs. George J. Seybert  
Jack and Susanne Sogard  
Daniel and Marianne Stout  
Gene and Rosemary Tanner  
Mr. and Mrs. Bob L. Turner  
Anna S. and James P. White  
William J. and Roberta Witchger

### Director's Circle (\$2,500 to \$4,999)

Anonymous  
Mrs. James F. Ackerman  
Alice Elizabeth Appel  
Ronald and Helmi Banta  
Dr. and Mrs. Richard E. Barb

Mr. and Mrs. L.H. Bayley  
Mr. and Mrs. Eric Bedel  
Robert and Patricia Bennett  
Ted and Peggy Boehm  
Dr. and Mrs. Thomas A. Broadie  
Michael and Mary Ann Browning  
Eddy and Kathy Cabello  
Eurelio M. and Shirley Cavalier  
Damon and Kay Davis  
Richard A. and Helen J. Dickinson  
Mrs. Connie Dyer  
Theodore M. Englehart and Dorothy H. Schulz  
Mr. and Mrs. John Fazli  
Marni R. Fechtman  
William L. Fortune Jr. and Joseph D. Blakley  
Mr. David Garrett  
Jody Garrigus  
Ms. Kim Gattle and Mr. Carter Wolf  
Dr. and Mrs. David Gerstein  
Richard and Sharon Gilmor  
The Eugene & Marilyn Glick Family Foundation  
Michelle and Perry Griffith  
Mrs. C. P. Griffith  
Mr. and Mrs. George W. Hamilton, Jr.  
Mr. John R. Hammond and Ms. Diana H. Hamilton  
Cran and Joan Henderson  
Ginny H. Hodowal  
Mark and Carmen Holeman  
Francine and Roger Hurwitz  
Susan M. Jacobs and David H. Kleiman  
Walter W. and Laura M. Jolly  
Joan D. Kahn  
Dana and Marc Katz  
Mr. Michael Kennedy and Ms. pegg kennedy  
Ms. Judith Kight  
Mrs. Ann W. King  
Mr. and Mrs. John Kite  
John Krauss and Marnie Maxwell  
Ms. Pamela Leap and Mr. Jeffrey Nilsson  
Ellen W. Lee and Stephen J. Dutton  
Mr. and Mrs. Jordan H. Leibman  
Mr. and Mrs. Richard A. Leventhal

Carlos and Eleanor Lopez  
Kurt and Linda Mahrdt  
Marni F. McKinney and Richard D. Waterfield  
Mr.\* and Mrs. William J. Mead  
Boris Meditch  
Mr. and Mrs. John M. Mutz  
Mr. and Mrs. F. Timothy Nagler  
Mr. and Mrs. Charles Oehrle  
Sean and Elizabeth O'Farrell  
John and Anne Pantzer  
Dorit and Gerald Paul  
Dr. Marian M. Pettengill  
Mr. Narcisso G. Povinelli  
George and Peggy Rapp  
Rev. and Mrs. C. Davies Reed  
Timothy J. Riffle and Sarah M. McConnell  
N. Clay and Amy Robbins  
Mr. and Mrs. Ian Rupert  
Dr. Scott Sharp and Mrs. Rhonda Long-Sharp  
Edward and Carol Smithwick  
Mr. and Mrs. Michael B. Stayton  
Pamela A. Steed and Peter Furno  
Ms. Kate L. Steele  
Mary M. Sutherland  
Mr. Samuel B. Sutphin and Ms. Kerry Dinneen  
Sidney Taurel  
Mr. Douglas L. Tillman  
Phyllis Vernick  
Bret and Mary Lou Waller  
Dr. and Mrs. Robert D. Walton  
Mr. and Mrs. Bradley J. Warnecke  
Rosalind H. Webb  
Emily A. West  
Margaret Wiley  
Mr. and Mrs. Gene E. Wilkins  
Mr. and Mrs. Dan Willis  
Mr. Jeremiah Wise  
Walter and Joan Wolf  
Turner and Diann Woodard  
Mr. and Mrs. Timothy T. Wright  
Mark and Sally Zelonis  
Mr. and Mrs.\* W. Paul Zimmerman Jr.  
Gene and Mary Ann Zink

### Patron Circle Plus (\$1,500-\$2,499)

Anonymous (2)  
Mr. and Mrs. Jerald Ancel  
Stephen and Julia Enkema  
Elaine Ewing Fess and Stephen W. Fess  
Mr. and Mrs. Jonathan R. Hess  
Bill and Nancy Hunt  
Ms. Mindy Hutchinson and Mr. Rob Friedman  
Harriet M. Ivey and Richard E. Brashear  
Sharon R. Merriman  
Blake Lee and Carolyn Neubauer  
David and Jill Resley  
Maribeth and J. Albert Smith Jr.  
Patsy Solinger  
Emily and Courtenay Weldon  
Mrs. William A. Wick

### Patron Circle (\$500-\$1,499)

Anonymous (2)  
Dorothy Alig  
Bob and Patricia Anker  
Mr. and Mrs. Don B. Ansel  
Mr. and Mrs. Steve Anzalone  
Joe and Charlene Barnette  
Frank and Katrina Basile  
Mr. and Mrs. Miles Batchelor  
Dr. Lisa Bauman and Mr. Matthew Wiersema  
Mr. Preston Bautista and Mr. Bruce Nixon  
Mr. and Mrs. Charles B. Beard  
Mr. Thomas Betley  
Mr. and Mrs. William A. Boncosky  
Mr. and Mrs. Bill Boncosky  
Mr. and Mrs. William C. Bonifield  
Mr. and Mrs. Joseph A. Borinstein  
Mr. C. Harvey Bradley  
Mr. and Mrs. R. Stephen Bradner  
Ms. Joan C. Brand and Mr. André Watts  
Mr. Gayle Brock and Ms. Suellen Bunting  
Dr. and Mrs. Richard C. Bump  
Lorene Burkhart  
Mr. Gary Butkus and Mr. Jason Range

Mr. and Mrs. Vince Caponi  
Ms. Olevia B. Cascadden  
Mr. Ralph H. Cassell and Dr. Gail Cassell  
George and Linda Charbonneau  
Mr. and Mrs. David Clifton  
Dr. and Mrs. John J. Coleman  
Mr. David Contis and Ms. Sandra Cath  
Mr. Daniel P. Corrigan  
Ms. Valerie Anne Cowan and Mr. Nicholas King  
Ms. Maria Crowe  
Mr. and Mrs. William Curran  
Mr. and Mrs. Alan J. Dansker  
Mr. and Mrs. Richard L. Darst  
Mr. and Mrs. Charles Davis  
Mr. and Mrs. Terry W. Dawson  
Mike Dinius and Jeannie Regan-Dinius  
Mr. and Mrs. Tony Dzwonar  
Mrs. Constance C. Earle  
Jeremy Efroymson  
Ms. Sheryl Elston and Dr. David Hamilton  
Dr. and Mrs. James P. Fadely  
Drs. Richard and Rebecca P. Feldman  
Mr. Henry L. Fernandez and Mr. Kenneth S. Palmer  
Ms. Wendy M. Fortune and Mr. Thomas R. Neal  
Mr. Steven C. Frazer  
Mr. and Mrs. Garry Fredericksen  
Phyllis and Ed Gabovitch  
Gary L. and Kristin C. Geipel  
Ms. Jennifer Gillen-Rosenberg  
Mr. and Mrs. John F. Gillespie  
David W. and Betty Givens  
Mr. and Mrs. Morton Green  
Dr. and Mrs. Jeffrey A. Greenberg  
Dr. and Mrs. Andrew Greenspan  
Mr.\* and Mrs. William J. Greer  
Mr. and Mrs. Thomas W. Grein  
Frank and Barbara Grunwald  
Ms. Kathryn Haigh  
Mr. Henry Havel and Ms. Mary Stickelmeyer  
Charles H. Helmen  
Dr. and Mrs. Samuel Hennessee  
Mr. Jay L. Hicks

Ms. Hollie Hirst and Ms. Lia Hirst  
Dr. and Mrs. Zachary I. Hodes  
Ms. Susan Hoffert and Mr. Mark Wolanski  
Mr. and Mrs. Stephen J. Holmes  
Mr. Daniel H. Howell and Mrs. Raymonde J. Howell  
Ms. Mindy Hutchinson and Mr. Rob Friedman  
Mr. and Mrs. Kenneth H. Inskeep  
Mrs. Ernest A. Jacques  
Mr. and Mrs. Jim James  
Mr. and Mrs. John J. Jaqua Jr.  
Craig W. Johnson  
Ms. Jenny Johnson  
Mr. W. Terry Jones and Ms. Susan P. Hoffman  
Susan R. Jones-Huffine and Matthew Huffine  
Judge and Mrs. James S. Kirsch  
Mr. and Mrs. Kevin M. Kohart  
Mr. and Mrs. Mark G. Kopetsky  
Mr. and Mrs. Scott Kraege  
Dr. Ruth Kramer and Dr. Joseph Jakubowski  
Audrey M. Larman  
Dr. Louis and Mrs. Myrna Lemberger  
Mr. and Mrs. James B. Lootens  
Mr. and Mrs. John Love  
Dr. and Mrs. Freeman Martin  
The Mamon Family  
Mr. and Mrs. Thomas J. Mathiesen  
Robyn McMahan  
Mr. Darin Moody  
Mrs. Jans Muller  
Mr. and Mrs. Patrick J. Murphy  
Dr. Sara H. Murphy and Mr. Clifford Hull  
Mr. and Mrs. Anthony H. Najem Sr.  
Dr. Alex Nitu  
Jane R. Nolan  
Mr. Ralph G. Nowak  
Ms. Julie Overbeck  
Mr. and Mrs. Keith Passwater  
Sally M. Peck  
Ms. Deborah K. Pennington and Mr. Dennis K. Brown  
Dr. Ora H. Pescovitz and Mr. Dan Walsh

\*deceased

\*deceased



Dr. and Mrs. John M. Plewes  
 Mr. James D. Rapp and Dr. Patricia W. Rapp  
 Dr. Rachel Y. Reams  
 Mr. and Mrs. Garrett Reasoner  
 Dr. and Mrs. Charles H. Redish  
 Mr. and Mrs. Thomas E. Reilly Jr.  
 Mr. Kenneth Remenschneider and Dr. Sharon L. Hoog  
 Mr. and Mrs. Alvin H. Ritz  
 Ms. Theresa R. Ritz  
 Mr. and Mrs. Thomas Roberts  
 Mr. Markham Roberts  
 Mr. David A. Rodgers  
 Mrs. Patty L. Roesch  
 Dr. and Dr. Dale A. Rouch  
 Nancy Russell  
 Mrs. Carly Sacher-Rubenstein and Mr. Eric Rubenstein  
 Mr. and Mrs. Daniel Sahlein  
 Anne and Roderick Scheele  
 Mr. John H. Schild and Ms. Nell E. Owens  
 Robert and Alice Schloss  
 Mr. and Mrs. Karl D. Schnelle  
 Mr. Thomas F. Schnellenger and Ms. Jacqueline Simmons  
 Mr. and Mrs. Michael L. Schultz  
 Dr. Albert E. Schultze and Dr. Marcia Kolvitz  
 Jeanne Scofield\*  
 Mr. William L. Scott  
 Dr. and Mrs. William E. Segar  
 Mr. and Mrs. Jerry D. Semler  
 Mr. Vishant Shah and Ms. Emily Shortridge  
 Michael Shapiro  
 Dr. Marguerite K. Shepard  
 Mr. Joseph Shoemaker and Ms. Heather Brumett  
 Mr. and Mrs. Donald K. Shuck  
 Dr. and Mrs. Aslam R. Siddiqui  
 Ms. Rachel M. Simon and Mr. Hale Stuart  
 Mr. and Mrs. Jim Singleton  
 Dr. and Mrs. James G. Spahn  
 Ms. Michelle Staley  
 Mr. Kent P. Steele  
 Mr. and Mrs. John A. Steen  
 Mr. and Mrs. Robert J. Stevens

Ms. Shelley A. Stewart and Ms. Melissa Barnett  
 Mr. James R. Sweeney II  
 Mr. and Dr. John H. R. Taylor  
 Mr. Jeffrey E. Thompson  
 Mr. and Mrs. John E. Toevs  
 Mr. and Mrs. Bob L. Veenstra  
 Mr. and Mrs. Tim Vidimos  
 Mr. Patrick Walsh and Ms. Jacqueline Eastman  
 Mr. and Mrs. Chuck Williams  
 Dr. and Mrs. John F. Williams  
 Mr. and Mrs. Gene Witchger  
 Mr. William Witchger  
 Mr. Christian Wolf and Ms. Elaine Holden  
 Mr. and Mrs. Chris Wulke  
 Marjorie P. Zeigler

#### ANNUAL FUND

#### \$2,000 and greater

Anonymous (3)  
 Mrs. Dale A. Davidson\*  
 Tom and Patty Hefner  
 IndCor Properties  
 Mr. and Mrs. John L. Lisher  
 Ms. Diane F. Murray\*  
 Joanne W. Orr Charitable Foundation  
 Mrs. Samuel R. Sutphin\*  
 Mr. and Mrs. Stephen Tarr  
 Marilyn M. Watkins Private Foundation  
 Mr. Christian Wolf and Ms. Elaine Holden

#### \$1,000 to \$1,999

Don and Karen Lake\* Buttrey, The Saltsburg Fund  
 Estate of Earl Harris\*  
 Mr. John H. Holliday  
 Mr. Gregory A. Huffman  
 Mr. and Mrs. Stephen A. Lathrop  
 Ms. Marlene Meyerson  
 Ms. Joanne Sprouse

#### \$500 to \$999

Ms. Barbara J. Briggs  
 Miss Diantha V. Degraw  
 Mr. and Mrs. John N. Failey

Mrs. Sherry Faris  
 Mr. Theaodis Gary Jr. and Ms. Helen Randolph  
 KEJ Foundation  
 Mr. and Mrs. Martin J. Kroot  
 Martin, Barry, Greg Kroot and Families  
 Mrs. Edith P. Lacey\*  
 Mr. Ignacio M. Larrinua and Ms. Mary T. Wolf  
 Dr. J.D. Marhenke  
 Mr. and Mrs. Leigh Marsh  
 Mrs. Virginia R. Melin  
 Blake Lee and Carolyn Neubauer  
 Ms. Margaret E. Piety and Mr. Josef M. Laposza  
 Nancy C. and James W. Smith  
 Mr. John J. Ulmer  
 Anna S. and James P. White  
 Mr. and Mrs. Robert M. Witt

#### \$250 to \$499

Mr. William Adams and Dr. Dawn Zimmer  
 Art Study Group  
 Dr. Greg Baur  
 Mr. and Mrs. Gregory Canter  
 Dr. and Mrs. Manuel Debono  
 Lori Efrogmson Aguilera and Sergio Aguilera  
 Mrs. Nancy J. Harrison  
 Mr. and Mrs. Robert P. Kassing  
 Ellen W. Lee and Stephen J. Dutton  
 Lilly Early Phase Oncology Team  
 Ernest Lorch  
 Mr. and Mrs. Byron L. Myers  
 Mr. and Mrs. Charles C. Otto  
 Dr. and Mrs. Donald M. Perez  
 Mr. Neal D. Prince  
 Mrs. Nancy R. Ross  
 Mr. and Mrs. Glenn D. Santner  
 Mr. and Mrs. Roger W. Schmenner  
 Ms. Tina Smith  
 Mr. and Mrs. James A. Strain  
 Dr. Robert D. Yee and Mrs. Linda M. Yee

#### GIFTS IN MEMORIAM

In Memory of Steven Ancel  
*Frank and Barbara Grunwald*  
 In Memory of Dorothy Barnes  
*Ms. Shirley Naughton*  
 In Memory of Edith Baur  
*Dr. Greg Baur*  
 In Memory of Norma J. Sherrill  
 Berry  
*Borshoff*  
 In Memory of Carl Brehob  
*Mrs. Milly Brehob*  
 In Memory of Amelia Burge  
 Eppihimer  
*Mr.\* and Mrs. William J. Greer*  
 In Memory of Elizabeth Buschmann  
*Mr. and Mrs. John E. Grimmer*  
 In Memory of Nahoma Deckelbaum  
*Mr. William Deckelbaum*  
*Ms. Margaret Hunter*  
*Joan D. Kahn*  
*Mr. and Mrs. Robert C. Lieberman*  
*Ms. Betty M. Okubo*  
*Ms. Dottie M. Stein*  
*Gene and Rosemary Tanner*  
 In Memory of Betty Diener  
*Mrs. Mary H. Kipka*  
 In Memory of Dr. Charles Echt  
*Ms. Dottie Fausset*  
*Ms. Mary Gosling*  
*Frank and Barbara Grunwald*  
*Mr. and Mrs. John W. Lauter*  
*Mr. and Mrs. Robert B. McNamara*  
*Dr. and Mrs. Robert D. Robinson Jr.*  
 In Memory of Ellen Fessler  
*Ms. Darla Treadway*  
 In Memory of Deloris Garrett  
*Chris and Ann M. Stack*  
 In Memory of Glenna Gibbs  
*Ms. Susan S. Barrett*  
 In Memory of Harriet Greathouse  
 Cain  
*Mr. Markham Roberts*

In Memory of Nikolas Forbes  
 Hansen, M.D.  
*Joan D. Kahn*  
 In Memory of Lillian and Bud  
 Helms  
*Dr. Alan Helms*  
 In Memory of Arthur Klein  
*Mr. and Mrs. Donald Fisher*  
 In Memory of Ursula Kolmstetter  
*Mr. Laurence Lampert*  
 In Memory of Eleanor "Nonie"  
 Krauss  
*The Frenzel Family Charitable Lead Trust*  
*John L. Krauss*  
 In Memory of Dr. Thomas Kuebler  
*Steven Conant, MD*  
 In Memory of Hilden Lacey  
*Mrs. Edith P. Lacey\**  
 In Memory of Alice McKinney  
*Tom and Nora Hiatt*  
 In Memory of Lucy G. Morgan  
 and William L. Morgan Sr.  
*Mr. and Mrs. Thomas S. Morgan*  
 In Memory of Colleen O'Reilly  
*Mr. and Mrs. Dave Appleton*  
 In Memory of Mary Lou Ristine  
*Mr. and Mrs. Donald L. Kramer*  
 In Memory of Christian Rossebo  
*Design Arts Society of the IMA*  
 In Memory of Mary Ruskowski  
*Indiana Hospital Association*  
*Mr. and Ms. Paul B. Niehaus*  
 In Memory of Valri Sandoe  
*Mr. and Mrs. Thomas R. Lugar*  
*Dorit and Gerald Paul*  
 In Memory of Anne Shullenberger  
*Ms. B. C. Bass*  
*Mrs. Carolyn J. Bourke*  
*Ms. Nancy B. Cunning and Mr. Jeffrey T. Eaton*  
*Mr. Ralph Drybrough*  
*Ms. Catharine Sheperd*  
*Dr. and Mrs. Daniel Shullenberger*  
*Mr. and Mrs. G. William Tolbert*  
 In Memory of Ambrose Smith  
*Mr. and Mrs. Kanwal P. Singh*

\*deceased

In Memory of the Mother of Mary  
 Ann Storm  
*Dorit and Gerald Paul*  
 In Memory of Barbara Story  
*Mrs. Mary P. Bowen*  
 In Memory of Harry Traugott  
*Ms. Deborah Bolas*  
*Mrs. Mim P. Dixon*  
*Dr.\* and Mrs. Charles R. Echt*  
*Lori Efrogmson Aguilera and Sergio Aguilera*  
*Ms. Nancy Margolin*  
*Dr. D. M. Stein*  
 In Memory of Shirley Uyen  
*Dr. Ramon S. Dunkin*  
*Ms. Amy Inskoop*  
*Ms. Teri Podgorski*  
*Georgetown Health Foods*  
 In Memory of Pat Whiteacre  
*Ms. Krista Baran*  
 In Memory of Delores Wright-Wood  
*Mrs. Editha Masters*  
*Ms. Kanita Sandidge*

#### GIFTS IN TRIBUTE

In Honor of Jim Bayse  
*Ann M. and Chris Stack*  
 In Honor of the 45th Wedding  
 Anniversary of Dr. and Mrs. Jon Fisch  
*Dr. Howard Harris and Mrs. Anita Harris*  
 In Honor of Kim Gattie  
*Dr. and Mrs. James P. Fadely*  
 In Honor of Kelly Griffith-Daniel  
*Ann M. and Chris Stack*  
 In Honor of Tom Hiatt's Birthday  
*E. Kirk McKinney Jr.\**  
 In Honor of Mark Holeman's  
 Birthday  
*Alice Elizabeth Appel*  
 In Honor of the Wedding  
 Anniversary of Mark and  
 Carmen Holeman  
*Anna S. and James P. White*  
 In Honor of Carole Kaufman  
*The Newcomers Club of Zionsville*

\*deceased

In Honor of the Birthday of E. Kirk  
 McKinney Jr.\*  
*Tom and Nora Hiatt*  
*Anna S. and James P. White*  
 In Honor of the Marriage of  
 Rachel Buck and Adam  
 Nienaber  
*Elen W. Lee and Stephen J. Dutton*  
 In Honor of Tricia Paik  
*Ms. Doris J. Bernard*  
*Robert and Alice Schloss*  
 In Honor of the 60th Wedding  
 Anniversary of Dorit and  
 Gerald Paul  
*Mr. and Mrs.\* George A. Rubin*  
*Ms. Barbara Solomon*  
*Walter and Joan Wolf*  
 In Honor of Niloo Paydar  
*Dr. Howard Harris and Mrs. Anita Harris*

For the Birthday of Eve Perlestein  
*Richard and Sharon Gilmor*  
*Mrs. Teresa E. Jones*  
 In Honor of Joyce Pruitt  
*Mr. and Mrs. Ryan Fite*  
 In Honor of the Marriage of  
 Michael Robertson and  
 Christopher Slapak  
*Lilly Early Phase Oncology Team*

In Honor of June Hoyer Rogers  
*Ms. Jenny Hoyer*  
 In Honor of Dr. James Robinson  
*Francine and Roger Hurwitz*  
 In Honor of the Birthday of Caryl  
 Shideler  
*Dr. Howard Harris and Mrs. Anita Harris*  
 In Honor of Terry Steadham  
*Ms. Nigel A. Shoaff*  
 In Honor of Dr. John Teramoto  
*Francine and Roger Hurwitz*  
 In Honor of Charles L. Venable  
 and Martin Webb  
*Ms. Doris J. Bernard*  
*Ms. Marlene Meyerson*  
*Ms. Jewel Stern*

In Honor of the Wedding  
 Anniversary of Mr. and Mrs.  
 James P. White  
*Francine and Roger Hurwitz*  
*Ellen W. Lee and Stephen J. Dutton*  
*Susan M. Jacobs and David H. Kleiman*  
*John L. Krauss and Marnie Maxwell*  
*Dorit and Gerald Paul*  
*Bret and Mary Lou Waller*  
 In Honor of Patty Whitehouse  
*Ms. Janet Cady*  
 In Honor of the Birthday of  
 Margaret Wiley  
*Mrs. Teresa E. Jones*  
 In Honor of James Zemaitis  
*Ms. Doris J. Bernard*

#### LEGACY CIRCLE

Anonymous (2)  
 Dan and Kate Appel  
 Mr. Edward N. Ballard  
 Frank and Katrina Basile  
 Mrs. Claire R. Bennett  
 Alice Berkowitz  
 Mr. and Mrs. Robert R. Bowman  
 Steven Conant, MD  
 Chris W. and Lesley J. Conrad  
 Phyllis Crum  
 Mrs. Becky Curtis Stevens  
 Damon and Kay Davis  
 Mr. J. Gregory Dawson  
 Richard A. and Helen J. Dickinson  
 The Efrogmson Family  
 Edgar and Dorothy Fehnel  
 Drs. Richard and Rebecca P. Feldman  
 Elaine Ewing Fess and Stephen  
 W. Fess  
 Penny and Russell Fortune III  
 Mrs. Otto N. Frenzel, III  
 Mr. David Garrett  
 David W. and Betty Givens  
 David and Julie Goodrich  
 John and M. Ann Hayes  
 Tom and Nora Hiatt  
 Mr. John H. Holliday

Francine and Roger Hurwitz  
 Mr. and Mrs. Rick L. Johnson Jr.  
 Joan D. Kahn  
 Dana and Marc Katz  
 Mr. and Mrs. David W. Knall  
 Kay F. Koch  
 Dr. Ruth Kramer and Dr. Joseph  
 Jakubowski  
 John L. Krauss and Margaret M.  
 Maxwell  
 James E. and Patricia J.  
 LaCrosse  
 Mr. and Mrs. Richard L. Ledman  
 Catharine D. Lichtenauer  
 June M. McCormack  
 Michael K. and Patricia P.  
 McCrory  
 E. Kirk McKinney Jr.\*  
 Mr. H. Roll McLaughlin  
 Boris Meditch  
 Ina M. Mohlman  
 Katherine C. Nagler  
 Perry Holliday O'Neal  
 Andrew and Jane Paine  
 Dorit and Gerald Paul  
 Mr. and Mrs. R. Stephen Radcliffe  
 George and Peggy Rapp  
 Mr. James D. Rapp and Dr.  
 Patricia W. Rapp  
 Dr. and Mrs. John G. Rapp  
 Rev. and Mrs. C. Davies Reed  
 Carolyn Schaefer and John Gray  
 Jack and Susanne Sogard  
 Charles and Peggy Sutphin  
 Marianne Williams Tobias  
 Ambassador Randall L. Tobias  
 Dr. Charles L. Venable and Mr.  
 Martin K. Webb  
 Anna S. and James P. White  
 Miss Lorain C. Will  
 Richard D. Wood  
 Mr. and Mrs. Timothy T. Wright  
 Mr. and Mrs. James W. Yee  
 Kwang Fei Young  
 Mr. and Mrs.\* W. Paul  
 Zimmerman Jr.

#### CORPORATE, FOUNDATION, AND GOVERNMENT SUPPORT

#### \$500,000 and greater

Anonymous  
 Lilly Endowment Inc.  
 The Melvin & Bren Simon  
 Foundation

#### \$250,000 to \$499,999

Efrogmson Family Fund, a CICF  
 Fund

#### \$100,000 to \$249,000

The Clowes Fund  
 Eli Lilly and Company Foundation  
 The Getty Foundation  
 Henry Luce Foundation  
 Institute of Museum and Library  
 Services

#### \$50,000 to \$99,999

Arts Council of Indianapolis and  
 the City of Indianapolis  
 The Penrod Society

#### \$25,000 to \$49,999

Alliance of the IMA  
 Ed Martin Automotive Group  
 The Indianapolis Foundation, a  
 CICF affiliate  
 The National Bank of Indianapolis

#### \$10,000 to \$24,999

Anonymous  
 Barnes & Thornburg LLP  
 Browning Day Mullins Dierdorf  
 Architects  
 Central Indiana Community  
 Foundation  
 The Hagerman Group  
 Indiana Arts Commission and the  
 National Endowment for the  
 Arts, a federal agency  
 ITT Educational Services, Inc.  
 JPMorgan Chase & Co.  
 Kahn's Catering  
 Macy's, Inc.  
 National Endowment for the Arts  
 Nicholas H. Noyes, Jr., Memorial  
 Foundation, Inc.



The Stutz and Van Riper-  
Woodard Family Foundation

**\$5,000 to \$9,999**

BKD, LLP  
Burberry  
Chubb Group of Insurance  
Companies  
Eskenazi Health Foundation  
Goldman, Sachs & Co.  
Gregory & Appel Insurance  
Indiana Business Solutions LLC /  
Xerox Corporation  
Indianapolis Monthly  
Indianapolis Motor Speedway /  
Verizon IndyCar Series  
Junior League of Indianapolis  
Lake City Bank  
MacAllister Machinery Co., Inc.  
MET Foundation Inc.  
Republic National Distributing  
Company  
Sun King Brewing Co.

**\$1,000 to \$4,999**

Allen Whitehill Clowes Charitable  
Foundation  
Borshoff  
Buckingham Foundation  
Fritz in Fishers  
Harman International  
Indiana Landmarks  
IndyHub  
Kirby Risk Electrical Supply  
Klipsch Audio  
The Lacy Foundation  
Lumina Foundation  
Mahrdt Properties, Inc.  
Marika Designs, LLC  
Oxford Financial Group, LTD  
Parr Richey Obremsky Frandsen  
& Patterson LLP  
Preppy Guide to Life  
Sago Sago  
Somerset CPAs, PC  
Stanley Smith Horticultural Trust

**DONORS TO THE COLLECTION**

Dorothy Alig  
Allen Whitehill Clowes Charitable  
Foundation  
Mr. John P. Antonelli  
Leonard and Kathryn Betley  
Mr. and Mrs. C. Christopher  
Brandt  
The Clowes Fund  
Mr. and Mrs. Donald A. Coffin  
Mr. and Mrs. Chris Colby  
Steven Conant, MD  
Mr. and Mrs. Trent Cowles  
Mrs. Mim P. Dixon  
Mr. and Mrs. John Fazli  
David and Cindy Force  
Form + Function, Inc  
Mr. Helmut Fortense  
Dr. and Mrs. Lawrence Goldberg  
Mr. and Mrs. John Grace  
Mr.\* and Mrs. William J. Greer  
Dr. Howard Harris and Mrs. Anita  
Harris  
Dr. Alan Helms  
Francine and Roger Hurwitz  
Georg Jensen  
Mr. and Mrs. Gerhard Klemm  
Ms. Marika Klemm and Mr.  
Michael Lubarsky  
Kay F. Koch  
Mr. William Leazer  
Leica Camera AG  
Mr. and Mrs. Eli Lilly II  
Ms. Ruth Lilly\*  
Mr. and Mrs. Thomas S. Morgan  
Dr. Shirley M. Mueller  
Mr. and Mrs. F. Timothy Nagler  
Ms. Christine Pasquinelli and Mr.  
Gary Jacobson  
Dorit and Gerald Paul  
Ms. Rosalind W. Perry  
Ms. Nancy Ramsey  
Gaye and John Rardon  
Mr. Markham Roberts  
Mr. Ronald Robertson  
Mr. and Mrs. Michael L. Schultz  
Mr. Joseph Shoemaker and Ms.  
Heather Brumett  
Ms. Joanne Sprouse  
Ann M. and Chris Stack

Ms. Jewel Stern  
Dr. Charles L. Venable and Mr.  
Martin K. Webb  
Ms. Natalie Wehr

**SPECIAL PROJECTS**

Anonymous (9)  
Allen Whitehill Clowes Charitable  
Foundation  
Alliance of the IMA  
Mrs. Mary Kay Anthony  
Bob and Toni Bader  
Ball State University Art Gallery  
Mr. Joseph Barabe  
Dr. and Mrs. Richard E. Barb  
Barnes & Thornburg LLP  
Joe and Charlene Barnette  
Mr. and Mrs. John M. Barth  
Mr. and Mrs. Bryan A. Beeler  
Alice Berkowitz  
Leonard and Kathryn Betley  
Walter E & Mary C Beyer Trust  
BKD, LLP  
Borshoff  
Mr. and Mrs. C. Christopher  
Brandt  
Mrs. Christine Branham  
Mr. and Mrs. Lionel Brown  
Mrs. Marsha L. Brown  
Browning Day Mullins Dierdorf  
Architects  
Mr. Stephen Brumfield  
Mr. and Mrs. Wayne Brummer  
Buckingham Foundation  
Burberry  
Mr. Gary Butkus and Mr. Jason  
Range  
Ms. Nancy Carey  
Central Indiana Community  
Foundation  
Mr. and Mrs. Cliff Chapman  
Chubb Group of Insurance  
Companies  
Mr. John J. Chlapik  
The Clowes Fund  
Mrs. Robin Coffee  
Mr. and Mrs. Chris Colby  
Mr. Joseph M. Conrad and Ms.  
Jean E. Ford  
Mr. and Mrs. Trent Cowles

Ms. Murph Damron  
Mrs. Karen L. Davis  
Mrs. Ione L. DeBolt\*  
Dr. and Mrs. Manuel Debono  
Design Arts Society of the IMA  
Mr. John Detwiller  
Richard A. and Helen J.  
Dickinson  
Mrs. Mim P. Dixon  
Ed Martin Automotive Group  
Efroymsen Family Fund, a CICF  
Fund  
Eli Lilly and Company Foundation  
Dr. and Mrs. William G. Enright  
Ms. Rosemary J. Ervin and Mr.  
Richard W. Schevitz  
Eskenazi Health Foundation  
Mrs. Patricia Fansler  
Dr. and Mrs. Martin R. Farlow  
Mr. and Mrs. John Fazli  
Marni R. Fechtman  
Edgar and Dorothy Fehnel  
Fidelity Charitable Gift Fund  
Mr. and Mrs. Donald Fisher  
Mrs. Dawn L. Fishman  
David and Cindy Force  
Mr. Helmut Fortense  
Mr. and Mrs. Garry Fredericksen  
The Frenzel Family Charitable  
Lead Trust  
Fritz in Fishers  
Jody Garrigus  
The Getty Foundation  
Richard and Sharon Gilmor  
Goldman, Sachs & Co.  
Mr. and Mrs. John Grace  
Mr.\* and Mrs. William J. Greer  
Gregory & Appel Insurance  
Mrs. Gwendolyn S. Groves  
The Hagerman Group  
Harman International  
Dr. Howard Harris and Mrs. Anita  
Harris  
Mrs. Nancy J. Harrison  
Dr. John H. Heiligenstein  
Henry Luce Foundation  
Tom and Nora Hiatt  
Mrs. Alice G. Hillis  
Ms. Jenny Hoyer  
Mrs. Ginger S. Hoyt  
Mr. and Mrs. Steven Huanghe

Mr. and Mrs. Terrell G. Hudson  
Ms. Margaret Hunter  
Francine and Roger Hurwitz  
Indiana Business Solutions LLC /  
Xerox Corporation  
Indiana Chapter - American  
Society of Landscape  
Architecture  
Indiana Consumer Trends  
Council  
Indiana Landmarks  
The Indianapolis Foundation, a  
CICF affiliate  
Indianapolis Monthly  
Indianapolis Motor Speedway /  
Verizon IndyCar Series  
IndyHub  
Insititute of Museum and Library  
Services  
Mr. and Mrs. Thomas S. Inui  
Inwin-Sweeney-Miller Foundation  
Susan M. Jacobs and David H.  
Kleiman  
ITT Educational Services, Inc.  
Mr. and Mrs. John C. Jenkins  
Mr. and Mrs. Rick L. Johnson Jr.  
JPMorgan Chase, Inc.  
Junior League of Indianapolis  
Kahn's Catering  
Mr. James L. Kincannon and Mr.  
Charles D. Goad  
Mrs. Mary H. Kipka  
Mr. and Mrs. Gerhard Klemm  
Kirby Risk Electrical Supply  
Klipsch Audio  
Kay F. Koch  
Mr. and Mrs. David M. Kollmeyer  
Mr. and Mrs. Donald L. Kramer  
John L. Krauss  
Mrs. Shirley M. Kulwin  
James E. and Patricia J.  
LaCrosse  
The Lacy Foundation  
Lake City Bank  
Mr. Laurence Lampert  
Mrs. Sandra Lawlis  
Lilly Endowment Inc.  
Carlos and Eleanor Lopez  
Lumina Foundation  
Niels and Patricia Lyster  
MacAllister Machinery Co., Inc.

\*deceased

Macy's, Inc.  
Mahrdt Properties, Inc.  
The Honorable Elizabeth N. Mann  
Mr. and Mrs. Robert F.  
Marchesani Jr.  
Marika Designs, LLC  
Marion County Master Gardner  
Association  
Mrs. Editha Masters  
Ms. Susanne M. McAlister and  
Mr. Jerry Greene  
Ms. Pat McClarney  
June M. McCormack  
Mrs. Ann T. McKenzie  
Mr. and Mrs. Rob McMillan  
Lynne Maguire and Will Miller  
Mrs. Dorothy L. Miller  
Dr. and Mrs. Bruce Mittlak  
Mr. and Mrs. F. Timothy Nagler  
The National Bank of Indianapolis  
National Endowment for the Arts

\*deceased

Mrs. Peggy M. Neal  
Blake Lee and Carolyn Neubauer  
The Newcomers Club of  
Zionsville  
Ms. Davine Nolcox  
Frank N. and Patricia L. Owings  
Oxford Financial Group, LTD  
Mr. and Mrs. Ersal Ozdemir  
John and Anne Pantzer  
Parr Richey Obremsky Frandsen  
& Patterson LLP  
Mrs. Sharon E. Paskins  
Dorit and Gerald Paul  
Ms. Florence Pauly\*  
Sally M. Peck  
The Penrod Society  
Mrs. Amy M. Perry  
Dr. Marian M. Pettengill  
Ms. Cathie Pfarr and Mr. Larry  
D. Lynch  
Ms. Teri Podgorski

Preppy Guide to Life  
Mrs. Joyce E. Pruitt  
Mr. Roger M. Radue  
Ms. Nancy Ramsey  
Mr. and Mrs. Christopher C.  
Reinhold  
Mr. Kenneth Remenschneider  
and Dr. Sharon L. Hoog  
Republic National Distributing  
Company  
Mr. and Mrs. Gerald L. Rush  
Mr. and Mrs. Alvin H. Ritz  
Ruth Lilly Philanthropic  
Foundation  
Sago Sago  
Ms. Kanita Sandidge  
Mr. and Mrs. Thomas M. Sands  
Mrs. Betty Schnur  
Ms. Nanette E. Schulte and Mr.  
Matthew Russell  
Mr. and Mrs. Michael L. Schultz

Mr. and Mrs. Michael Semo  
Mr. and Mrs. Gregory Shaner  
Ms. Catharine Sheperd  
Mr. Joseph Shoemaker and Ms.  
Heather Brumett  
Mr. James Sholly  
The Melvin & Bren Simon  
Foundation  
Mr. and Mrs. Jeff Smithburn  
Jack and Susanne Sogard  
Ms. Barbara Solomon  
Somerset CPA, PC  
Bernadine and Jon Speers  
Ms. Joanne Sprouse  
Ann M. and Chris Stack  
Stanley Smith Horticultural Trust  
Sharon and Ronald Stegemoller  
Dr. and Mrs. John G. Stevens  
The Stutz and Van Riper-  
Woodard Family Foundation  
Sun King Brewing Co.

Charles and Peggy Sutphin  
Mr. and Mrs. Stephen Tarr  
Ms. Diane Thompson  
G. Thrapp Jewelers  
Mrs. Anne S. Throop  
Mr. and Mrs. John E. Toevs  
Ms. Darla Treadway  
Dr. and Mrs. Eugene D. Van Hove  
Ms. Edith G. Vasu  
Dr. Charles L. Venable and Mr.  
Martin K. Webb  
Mrs. Joanne Wade  
Bret and Mary Lou Waller  
Ms. Natalie Wehr  
Margaret Wiley  
Mrs. Nina K. Winter  
Drs. John and Linda  
Zimmermann



# IMA BOARD OF GOVERNORS

2014–2015

## EXECUTIVE COMMITTEE

**Thomas Hiatt**  
Chair

**Rick L. Johnson**  
Vice Chair

**Matthew Gutwein**  
Vice Chair

**Ersal Ozdemir**  
Secretary

**Peter A. Morse, Jr.**  
Treasurer

**Marya Rose**  
At-Large Member

**Lynne M. Maguire**  
At-Large Member

**June M. McCormack**  
Immediate Past Chair

Sergio Aguilera

Gay Barclay

Kathryn G. Betley

Mary Clare Broadbent

Bradley B Chambers

David Eskenazi

Jane Fortune

Kent Hawryluk

Kay Koch

Michael Kubacki

Deborah Lilly

Benjamin A. Pecar

Derica W. Rice

Michael Robertson, MD

Susan Russell

Jeffrey Smulyan

# IMA AFFILIATE GROUP LEADERSHIP

## ALLIANCE OF THE IMA

**Susanne McAlister**  
President

## ASIAN ARTS SOCIETY

**Nancy Inui**  
President

## CONTEMPORARY ART SOCIETY

**Anne Surak**  
President

## DESIGN ARTS SOCIETY

**Marika Klemm**  
President

## FASHION ARTS SOCIETY

**KimAnn Schultz**  
President

## HORTICULTURAL SOCIETY

**David Gorden**  
President



George Nelson, Herman Miller Furniture Company,  
**Home Office Desk model 4658** Design Arts Society Fund 2014.98A-F



# IMA Staff

## ADMINISTRATION

Charles L. Venable, PhD  
Melvin & Bren Simon Director and CEO

Catherine Pacific  
Executive Assistant to the  
Melvin & Bren Simon Director and CEO

## COLLECTIONS, EXHIBITIONS, AND FACILITIES

Kathryn Haigh  
Deputy Director of Collections,  
Exhibitions, and Facilities Management

Erin Hornbach  
Collections and Exhibitions Coordinator

## Collection Support

Marc Anderson  
Preparator/Crating Specialist

Andrew Michael Bir  
Director of Collection Support and  
Special Projects

Ezra Birt  
Preparator/Multimedia Technician

Jonathan Brewer  
Preparator/Carpenter

Josh Chatwin  
Preparator/Multimedia Technician

Mike Griffey  
Chief Preparator

Kelly Griffith-Daniel  
Manager of Preservation Initiatives

Kenneth Keeney  
Preparator/Mount Maker

John Ross  
Collection Technician

William Scott Shoultz  
Preparator/Paint Booth Technician

Paul Siebenthal  
Preparator/Mount Maker

Michael Stewart  
Senior Preparator

## Conservation

Fiona Beckett  
Clowes Conservator of Paintings

Sheena Birt  
Conservation Technician

Sue Dupuis  
Senior Coordinator, Conservation and  
Conservation Science Departments

Claire Hoevel  
Senior Conservator of Paper

Amanda Holden  
Associate Conservator of Textiles

Laura Kubick  
Assistant Conservator of Objects

Mallory Marty  
Conservation Technician I

David Miller  
Chief Conservator and Senior  
Conservator of Paintings

Laura Mosteller  
Conservation Technician II

Bermet Nishanova  
Conservation Scholar

Erica Schuler  
Graduate Intern

Linda Witkowski  
Senior Conservator of Paintings

## Conservation Science

Lynn Chua  
IMA Scholar in Conservation Science

Gregory D. Smith, PhD  
Otto N. Frenzel III Senior Conservation  
Scientist

## Custodial Services

Thelma Austin  
Custodian

Charles Fite Jr.  
Assistant Director of Custodial Services

Marilyn Fitzsimmons  
Custodian

Keith Freeman  
Custodian

Mychal Gray  
Custodian

Leslie Hardiman Morris  
Custodian

Crystal Richardson  
Custodian

Richard Roberson  
Custodian

Calvin Thomas  
Custodian

Robert Tolden  
Custodian

Shirley Vales  
Lead Custodian

## Exhibitions

Kayla Tackett  
Manager of Exhibitions

## Facilities

John Battles  
Senior Building/Maintenance Technician

Donald Cowan  
Building Technician

Phil Day  
Associate Director of Facilities,  
Mechanical and Architectural Trades

Jessica Fines  
Senior Facilities Administrative Assistant

Bert Reader  
Director of Facilities

Donna Sink  
Campus Architect

Rick Sterrett  
Buildings Technician

Jeffery Watters  
Technician Senior Building/Central Plant

## Registration

Angie Day  
Associate Registrar for Exhibitions

Christina Greive  
Assistant Registrar for Loans  
and Exhibitions

Sherry D'Asto Peglow  
Registrar for Collections

Jennifer Rigsby  
Assistant Registrar for Collections

Linda Speight  
Registration Coordinator

## Rights and Reproductions

Robin Lawrence  
Rights and Reproductions Assistant

Anne Young  
Manager of Rights and Reproductions

## Security

Sarah Aown  
Security Rover

Billy R. Anderson  
Gallery Guide

Tatiana Bannatyne  
Gallery Guide

Jeffrey Bell  
Control Room Operator

Janice Bruen-Owens  
Security Rover

Dwayne Clay  
Security Rover

Tammy Couch  
Security Supervisor

Alexi Dollar  
Security Rover

Denise Fines-Rea  
Control Room Operator

Clifford Graham III  
Training and Gallery Guide Manager

Dylan Hobbs  
Security Rover

Anthony Honcharuk  
Control Room Operator

Michael Howell  
Security Supervisor

Margaret Hurt  
Gallery Guide

Judy Jewell  
Gallery Guide

Betty Jiles  
Gallery Guide

Holly Johnson  
Gallery Guide

Jabril Johnson  
Security Rover

Willie Johnson  
Gallery Guide

Katy Kuchler  
Gallery Guide

David Lakin  
Gallery Guide

Ty'Ran Lambert  
Security Rover

Robin Long  
Associate Director of Security

Daniel MacLean  
Security Rover

Mary Kate Marbley  
Gallery Guide Supervisor

Rafael Miles  
Security Rover

Jared Miller  
Security Rover

Silvan Montgomery  
Security Supervisor

Marion Nantz  
Gallery Guide

Arabian Nash  
Security Rover

Jennifer Padgett  
Gallery Guide

Jesse Parks  
Gallery Guide

Sandra Ranney  
Gallery Guide

Hannah Replogle  
Gallery Guide

Kelcie Reynolds  
Gallery Guide

Tonya Robinson  
Gallery Guide

Dolfin Roper  
Gallery Guide

Andy Sanders  
Control Room Operator

Anna Saracoff  
Gallery Guide

Sara Schoentrup  
Senior Security Coordinator

Lawrence Steeb  
Security Rover

Amanda Stoffleth  
Security Rover

Michael John Strauch  
Gallery Guide

Irene Trent  
Gallery Guide

Marvena Washington  
Gallery Guide

Bill Watkins  
Security Rover

Cameron White  
Gallery Guide

Aerial Whitfield  
Security Rover

Martin Whitfield  
Director of Security

Bronte Wiener  
Gallery Guide

Derraline Williams  
Gallery Guide

Patricia Williamson  
Gallery Guide

Gary Younger  
Control Room Operator

Jacqueline Zahnow  
Gallery Guide

## FINANCE, HUMAN RESOURCES, AND PURCHASING

Jerry Wise  
Chief Financial Officer

Mo McReynolds  
Administrative Coordinator to the CFO

## Finance

James Bufore  
Dock Operations Specialist

Nancy Goodness  
Accountant II

Justin Grange  
Budget Planning and Procurement  
Manager

Pam Graves  
Accounts Payables

Clarice Nance  
Staff Accountant

Cayla Rosine  
Staff Accountant

Jenny Soline  
Senior Accountant

## Human Resources

Emily Gavin  
Human Resources Assistant and Payroll  
Coordinator

Laura McGrew  
Director of Human Resources

Amanda Schank  
Human Resources Generalist

## IMA LAB

Gray Bowman  
Lead Software Architect

David D'Amico  
Software Developer

Matt Gipson  
Senior Digital Graphic Designer

Kyle Jaebker  
Director

Todd Kersey  
Software Developer

Rita Troyer  
Digital Graphic Designer

Jeremy Tubbs  
Web Application Developer

## Information Technology Operations

Lawrence Carver  
Help Desk Specialist

Terry Myers  
Network Administrator

Lindsay Stewart  
Systems and Database Administrator

## INSTITUTIONAL ADVANCEMENT

Kim Gattle  
Deputy Director for Institutional  
Advancement

Claire Bailey  
Manager of Donor Relations

Steven Conrad  
Database Coordinator

Amy Dygert  
Grants and Corporate Partnerships  
Coordinator

Theresa Grimason  
Database Coordinator

Megan Hilbrich  
Grant Writer

Julia Holbrook  
Major Gift Officer

Jean Hurley  
Administrative Coordinator for  
Advancement and Donor Relations

Grace Meils  
Membership and Annual Giving Officer



Kate Oberreich  
Membership and Annual Giving Associate

Janelle Miller  
Advancement Services Manager

Megan Nesbit  
Foundation and Corporate Relations  
Gift Officer

Christa Thacker  
Affiliate Gift Officer

Andra Walters  
Director of Major Gifts

Molly White  
Stewardship Coordinator

## MARKETING AND EXTERNAL AFFAIRS

Connie Dyer  
Deputy Director of Marketing  
and External Affairs

Dassie Rice  
Marketing and Events Coordinator

## Event Services

Nicole Minor  
Events Manager

## Guest Services

Emily Akard  
Receptionist

Lauryn Andrews  
Guest Services Associate

Kyle Becnel  
Guest Services  
Parking Associate

Zoe Black  
Guest Services Associate

Jo Anne Bowen  
Guest Services Associate

Kathi Brethauer  
Guest Services Associate

Brittany Davis  
Guest Services Associate  
Weekend Team Lead

Yvonne Franklin  
Guest Services Associate

Allison Gutierrez  
Guest Services Associate

Gabriela Hall  
Guest Services— Parking Associate

Catherine Harmon  
Guest Services Associate

Nancy Hodgkins  
Guest Services Associate

Lindsay Holstine  
Manager of Guest Services

Heather Hudson  
Receptionist

Amelia Jarrett  
Guest Services Associate

Lois LeFever  
Guest Services Associate

Rachel Majewski  
Guest Services Associate

Tanya Maul  
Guest Services Associate  
Week Team Lead

Kristin Merrill  
Guest Services  
Parking Associate

Olivia Stapleton  
Guest Services Associate

Tim Thompson  
Assistant Manager of Guest Services

Matthew Whitlock  
Guest Services Associate

## Marketing

Bethann Buddenbaum  
Online Content Manager

Susie McKenna  
Director of Marketing

Megan Oldfather  
Tourism Sales Coordinator

Stephanie Perry  
Public Relations Manager

## Retail Management

Liz Bradner  
Retail Sales Associate

Jenny Geiger  
Director of Retail Services

Meredith Hylton  
Retail Sales Associate

Judi Kueterman  
Retail Sales Associate

Heather Renick  
Retail Sales Associate

Suzannah Risser  
Retail operations Manager

Shirley Simmons  
Retail Sales Associate

Beth Sahaidachny  
Assistant Buyer

Veronica Vela  
Assistant Retail Operations Manager

## Volunteer Services

Chris Morehead  
Manager of Volunteer Services

## NATURAL RESOURCES AND HISTORIC PRESERVATION

Mark Zelonis  
The Ruth Lilly Deputy Director of  
Environmental & Historic Preservation

Pam Leap  
Administrative Assistant

## Greenhouse

John Antonelli  
Greenhouse Sales Assistant

Sue Arnold  
Greenhouse Sales Assistant

Debbie Ellett  
Greenhouse Sales Assistant

Laurie Gillespie  
Plant Care Specialist

Lynne Habig  
Greenhouse Shop Coordinator

Marian Keith  
Greenhouse Coordinator

Janis Keyes  
Greenhouse Plant Assistant

Sue Nord Peiffer  
Greenhouse Manager

## Historic Resources

Bradley Brooks  
Director of Historic Resources

Bonnie Cate  
Collection Manager for Historic Properties

Travis Eckelman  
Miller House Groundskeeper

Matthew Fertig  
Gallery Guide Miller House

James L. Haro  
Gallery Guide Miller House

Christian Morlock  
Security Supervisor Miller House

Benjamin Lawrence Wever  
Miller House Gardens Manager

## Horticulture

Katie Booth  
Horticulturist

Irvin Etienne  
Horticultural Display Coordinator

Chad Franer  
Director of Horticulture

Gwyn Rager  
Assistant Horticulturist

Patty Schneider  
Horticulturist

## Park

John Barbaglia  
Senior Groundskeeper

Chandler Bryant  
ANP Grounds Coordinator

Steve Clements  
ANP Groundskeeper

Neal McWhirter  
Groundskeeper

Karl Schildbach  
Senior Grounds Technician

## PUBLIC PROGRAMS AND AUDIENCE ENGAGEMENT

Preston Bautista, PhD  
Deputy Director for Public Programs and  
Audience Engagement

Calvin Caskey  
Administrative Assistant for Audience  
Engagement

## Audience Engagement

Heidi Davis-Soylu, PhD  
Manager of Teacher and  
Adult Programs

Emily Izzo  
Audience Engagement Specialist I

Cara Lovati  
Coordinator of School Collaborations

Wendy Wilkerson  
Senior Coordinator of School and Group  
Services

## Curatorial

Leslie Anderson-Perkins  
Curatorial Assistant, European and  
American Painting, Sculpture, and Works  
on Paper

Jacquelyn Coutré  
Clowes Curatorial Fellow, European  
Painting and Sculpture before 1800

Christian Feest  
Mellon Curator-at-Large for Native  
American Art

Sayuri Guelcé  
Curatorial Assistant, Asian Art

Kirstin Krause Gotway  
Curatorial Assistant, Mellon Global  
Curators

Lindsay Hamman  
Manager of Public Programs

Niloo Imami-Paydar  
Curator of Textiles and Fashion Arts

Marty Krause  
Curator of Prints, Drawings, and  
Photographs

Ellen W. Lee  
The Wood-Pulliam Distinguished Senior  
Curator

Lauren Lucchesi  
Curatorial Coordinator

Rebecca McNamara  
Curatorial Coordinator

Tricia Y. Paik, PhD  
Curator of Contemporary Art

Constantine Petridis, PhD  
Mellon Curator-at-Large for African Art

Tariq Robinson  
Manager of Community & Outreach  
Programs

Annette Schlagenhauff, PhD  
Associate Curator of Special Projects

Taylor Sitorius  
Curatorial Assistant, Audience  
Experiences and Performance

David Sledge  
Curatorial Assistant, Contemporary Art

Scott Stulen  
Curator of Audience Experiences and  
Performance

John Teramoto, PhD  
Curator of Asian Art

Roseanne Winings  
Assistant Curator of Audience  
Experiences and Performance

James Zemaitis  
Mellon Curator-at-Large for Decorative  
Arts and Contemporary Design

## Design

Carol Cody  
Designer of Lighting

Lara Huchteman  
Exhibition Designer

Matt Kelm  
Senior Graphic Designer

Phil Lynam  
Chief Designer

Corey Steinmetz  
Junior Graphic Designer

Laurie Gilbert Wood  
Design Project Manager

## Docent Program

Jennifer Todd  
Manager of Docent Programs

## Interpretation, Media, and Evaluation

Daniel Beyer  
Senior Media Producer

Alyssa Boge  
Audience Research Associate

Jordyn Cox  
Imaging Technician, Luce Digitization  
Grant

Drew Endicott  
Collections Photographer, Luce  
Digitization Grant

Morgan Faulkner  
Senior Audience Research Associate

Silvia Filippini-Fantoni, PhD  
Director of Interpretation, Media, and  
Evaluation

Alexander Parker Hampton  
Audience Research Associate

Emily Hellmuth  
Manager of Interpretation

Tascha Horowitz  
Manager of Photography

Dylan Remes Jensen  
Editor and Manager of Publications

Tiffany Leason  
Manager of Audience Research and  
Evaluation

Eric Lubrick  
Senior Photographer

Jen Mayhill  
Manager of Play-Based Learning

Andrea Overman  
Audience Research Associate

Abigail Wolf  
Senior Audience Research Associate

## Libraries and Archives

Alba Fernández-Keys  
Head of Libraries and Archives

Samantha Norling  
Archivist

## Production Services

Jason Hamman  
Technical Productions Manager

David Lapham  
Technical Productions Coordinator

Christopher Reising  
Production Technician





**Global Impact**

As an internationally acclaimed museum with a vast encyclopedic collection, the IMA shares its works of art through loans around the world. The map demonstrates the Museum's global impact for fiscal year 2014–2015.

**The Children's Museum of Indianapolis**  
Indianapolis, Indiana

**Indiana University-Purdue University at Indianapolis**  
Indianapolis, Indiana

**Herron High School**  
Indianapolis, Indiana

**Indianapolis Symphony Orchestra**  
Indianapolis, Indiana

**The Nelson-Atkins Museum of Art**  
Kansas City, Missouri

**The Saint Louis Art Museum**  
St. Louis, Missouri

**Musée d'Orsay**  
Paris, France

**National Gallery of Canada**  
Ottawa, Ontario

**ING Cultural Centre**  
Brussels, Belgium

**Musée des impressionnismes, Giverny**  
Giverny, France

**National Galleries of Scotland**  
Edinburgh, Scotland

**Museo Thyssen-Bornemisza**  
Madrid, Spain

**The Andy Warhol Museum**  
Pittsburgh, Pennsylvania

**Portland Museum of Art**  
Portland, Maine

**Smithsonian American Art Museum**  
Washington, D.C.

**Kröller-Müller Museum**  
Otterlo, The Netherlands

**Los Angeles County Museum of Art**  
Los Angeles, California

**Musée des beaux-arts de Montréal**  
Montréal, Québec

**Museo de Santa Cruz**  
Toledo, Spain

**Woodmere Art Museum**  
Philadelphia, Pennsylvania

**The Phillips Collection**  
Washington, D.C.

**Indiana University Art Museum, Indiana University**  
Bloomington, Indiana

**Georgia Museum of Art, University of Georgia**  
Athens, Georgia

**Daura Gallery, Lynchburg College**  
Lynchburg, Virginia

**Joel and Lila Harnett Museum of Art**  
Richmond, Virginia

**Abeno Harukas Art Museum**  
Osaka, Japan

**Tokyo Metropolitan Art Museum**  
Tokyo, Japan

**The Museum of Modern Art**  
New York, New York

**Mu.ZEE**  
Ostend, Belgium

**Dallas Museum of Art**  
Dallas, Texas

**Virginia Museum of Fine Arts**  
Richmond, Virginia

**Denver Art Museum**  
Denver, Colorado

**Cooper-Hewitt, Smithsonian Design Museum**  
New York, New York

**Basilica Palladiana**  
Vicenza, Italy

**The Montclair Art Museum Telfair**  
Montclair, New Jersey

**Städtisches Kunstinstitut und Städtische Galerie**  
Frankfurt am Main, Germany

**Tacoma Art Museum**  
Tacoma, Washington

**Sterling and Francine Clark Art Institute**  
Williamstown, Massachusetts

**Bruce Museum**  
Greenwich, Connecticut



# Photo Credits

## Front cover:

Sunrise on the Dudley and Mary Louise Sutphin Mall. Artwork: Roy Lichtenstein (American, 1923–1997), *Five Brushstrokes* (detail), designed 1983–1984, fabricated 2012, painted aluminum, dimensions vary. Robert L. and Marjorie J. Mann Fund, Partial Gift of the Roy Lichtenstein Foundation, 2013.443A-E.4 © Roy Lichtenstein Foundation. Photo by Eric Lubrick.

## Page 1:

Guitarists prepare for Stuart Hyatt’s sound installation *E is for Equinox* in The Virginia B. Fairbanks Art & Nature Park: 100 Acres as part of the 2014 Autumn Equinox Community Day supported by The Hagerman Group. Artwork: Type A (American, founded 1998), *Team Building (Align)* (detail), 2010, aluminum, steel cables, telephone poles, 2 rings of 30 in. circumference, each. Commissioned by the Indianapolis Museum of Art, Courtesy of the Artists and Robert Goff Gallery, New York. Photo by Nathaniel Edmunds Photography.

## Pages 2-5:

The Rapp Family Ravine Garden in full bloom on the historic Oldfields–Lilly House & Gardens estate. Photo by Tascha Horowitz.

## Pages 6-7:

Top left: Avant Brunch being prepared by Chef Alan Sternburg in the Marsh Supermarkets Food Prep Area. Photo by Nathaniel Edmunds Photography.

Top center: A family on the Dudley and Mary Louise Sutphin Mall during the Summer Solstice Community Day. Photo by Drew Endicott.

Top right and bottom left: Artists at work during the Monster Drawing Rally in the Efroymsen Family Entrance Pavilion. Photos by Nathaniel Edmunds Photography.

Bottom center: Guests during the Summer Solstice Art Swap in front of the Sutphin Fountain. Photo by Drew Endicott.

Bottom right: Young guests participate in Family Day activities in the Pulliam Family Great Hall. Photo by Nathaniel Edmunds Photography.

## Pages 8-9:

Cadillac *Cyclone XP-74* (detail), 1959. Designed by Harley J. Earl and Carl Renner. Courtesy of General Motors Heritage Center, Warren, Michigan. Photo by Peter Harholdt.

## Page 10-11:

Top: A guest views the Bugatti *Type 57 Compétition Coupé Aerolithe* re-creation, 1935. Center: Guests listening to both the adult and kid audio guides. Bottom: Guests decorate their own cars during the opening party for the exhibition *Dream Cars: Innovative Design, Visionary Ideas* installed in the Allen Whitehill Clowes Special Exhibition Gallery. Photos by Nathaniel Edmunds Photography.

Right: *Norman Timbs Special* (detail), 1947. Designed by Norman Timbs. Courtesy of Gary and Diane Cerveny. Photo by Peter Harholdt.

**Page 12:** Summer campers take part in a DJ dance party in the Caroline Marmon Fesler Gallery. Artwork: Julianne Swartz (American, b. 1967), *Terrain* (detail), 2008, 14 and 18 gauge colored electrical wire, speakers, and sound, dimensions variable. Martha Delzell Memorial Fund, 2010.69 © Julianne Swartz. Photo by Nathaniel Edmunds Photography.

## Page 13:

Children enjoy a variety of activities in the gardens, galleries, activity spaces, and The Virginia B. Fairbanks Art & Nature Park: 100 Acres. Photos by Nathaniel Edmunds Photography. Artwork lower left: Jeppe Hein (Danish, b. 1974), *Bench Around the Lake* (detail), 2010, galvanized steel, yellow paint, dimensions vary. Commissioned by the Indianapolis Museum of Art, Supported by Friends of Bret Waller, Jane Weldon Myers Acquisition Fund, Mrs. Pierre F. Goodrich Endowed Art Fund, Roger G. Wolcott Fund, E. Hardey Adriance Fine Arts Acquisition Fund in memory of Marguerite Hardey Adriance, Alice and Kirk McKinney Fund, Louisa K. Valentine Memorial Contemporary Art Fund, Contemporary Art Discretionary Fund, 2014.103A-0 © Jeppe Hein, Courtesy of Johann König, Berlin, and 303 Gallery, New York. Photo by Tascha Horowitz.

## Pages 15-16:

Top left: Japanese, *Female Role No Mask of the Type Called Zo Onna* (detail), Momoyama (1573–1600) to early Edo (1600–1868) periods, wood, gesso, polychrome, 8-1/4 × 5-1/8 × 3-1/16 in. Jane Weldon Myers Art Fund, The Beeler Fund, Asian Art Discretionary Fund, 2012.8. Exhibited in the Frances Parker Appel Gallery March 13 – August 16, 2015. Photo by Eric Lubrick.

Top center: Paul Signac (French, 1863–1935), *Opus 217. Against the Enamel of a Background Rhythmic with Beats and Angles, Tones and Tints, Portrait of M. Félix Fénéon in 1890*, 1890–1891, oil on canvas, 29 × 36-1/2 in. Fractional gift of a private collector to The Museum of Modern Art, New York. Digital image © The Museum of Modern Art/Licensed by SCALA/Art Resource, NY. Exhibited in the Allen Whitehill Clowes Special Exhibition Gallery June 15 – September 7, 2014.

Top right: Installation view of *Erwin Wurm: Euclidean Exercises*, exhibited in the Efroymsen Family Entrance Pavilion January 15 – August 30, 2015. Artwork: Erwin Wurm, *One Minute Sculpture, Organization of Love*, 2005/2015. Courtesy Erwin Wurm, Vienna, and Lehmann Maupin, New York and Hong Kong. Photo by Eric Lubrick.

Bottom left: Gorham Mfg. Co. (American, est. 1831), *Turtle Soup Tureen and Tray* (detail), 1890, gilt silver, Anonymous Lender. Exhibited in Lilly House July 31, 2015 – September 18, 2016. Photo by Eric Lubrick.

Bottom center: Installation view of *Michelle Grabner: Weaving Life into Art*, exhibited in the June M. McCormack Forefront Galleries May 22 – November 15, 2015. Artworks: Michelle Grabner, *Untitled*, 2014 and *Untitled*, 2015. Courtesy of the artist and James Cohan Gallery, New York. Photo by Eric Lubrick.

Bottom right: Man Ray (American, 1890–1976), *Mime*, from *Revolving Doors*, 1926, pochoir, 22-1/16 × 15 in. Emma Harter Sweetser Fund, 75.733.1 © 2016 Man Ray Trust / Artists Rights Society (ARS), New York / ADAGP, Paris. Exhibited in the Susan and Charles Golden Gallery October 24, 2014 – July 26, 2015. Photo by Eric Lubrick.

## Page 17:

Stephen Sprouse (American, 1953–2004) (designer), *Pantsuit Ensemble*, Fall/Winter 1991, synthetic netting with plastic paillettes, Fashion arts Society Acquisition Fund, 2013.310A-D.2 © Stephen Sprouse. Photo by Eric Lubrick.

## Page 18:

Photo by Eric Lubrick.

## Page 20:

Photo by Eric Lubrick.

## Pages 24-25:

Left: Photo by Eric Lubrick.

Right: The Lucy and William Wick Cutting Garden in bloom next to the Madeline F. Elder Greenhouse. Photo by Eric Lubrick.

## Page 26:

Guests on board the eco-friendly Garden Tram, The Late Miss Kate, given in memory of Katie Sutphin. Photo by Eric Lubrick.

## Page 27:

Top left: *Baptisia* ‘Cheries Jubilee.’ Photo courtesy of Walters Gardens, Inc.

Top right: *Kniphofia* ‘Pineapple Popsicle.’ Photo courtesy of TERRA NOVA® Nurseries, Inc.

Center left: *Lobelia* ‘Monet Moment.’ Photo courtesy of TERRA NOVA® Nurseries, Inc.

Center right: *Prunus serrulata* ‘Kwanzan.’ Photo by PatrikSlezak / iStock.

Bottom left: Outstanding garden display at the Indianapolis Museum of Art. Photo by Irvin Etienne.

Bottom right: *Petalostemum purpureum*. Photo by jMortensen / iStock.

## Page 28:

Top: Tanaka Ryōhei 田中良平 (Japanese, b. 1933), *Chrysanthemum* (detail), 1969, etching and aquatint on paper, 5 × 3-7/8 in. (image) 10-3/4 × 8-1/4 in. (sheet). Gift of Carolyn J. Greer in memory of her mother, Amelia Burge Epphimer, 2014.123 © Tanaka Ryōhei. Photo by Eric Lubrick.

Bottom: Christopher Dresser (Scottish, 1834–1904) (designer), Hukin & Heath (English) (manufacturer), *Lidded Tureen with Ladle*, 1880, Electroplated silver, ebony, A. 1-.2) lidded tureen 8 × 6 × 5-3/4 in. B) ladle 10 × 2-1/4 in. Gift of Dr. and Mrs. Lawrence Goldberg, 2014.185A.1-B. Photo by Eric Lubrick.

## Page 29:

Top: Ayala Serfaty (Israeli, b. 1962), *Memory, 2011* (detail), 2011, glass rods, polymer membrane, 22 × 32 × 16 in. Gift of Daniella Ohad, Maison Gerard, Ltd., New York, and the artist, 2015.14 © Ayala Serfaty. Photo by Drew Endicott.

Bottom: Jeppe Hein (Danish, b. 1974), *Bench Around the Lake* (detail), 2010, galvanized steel, yellow paint, dimensions vary. Commissioned by the Indianapolis Museum of Art, Supported by Friends of Bret Waller, Jane Weldon Myers Acquisition Fund, Mrs. Pierre F. Goodrich Endowed Art Fund, Roger G. Wolcott Fund, E. Hardey Adriance Fine Arts Acquisition Fund in memory of Marguerite Hardey Adriance, Alice and Kirk McKinney Fund, Louisa K. Valentine Memorial Contemporary Art Fund, Contemporary Art Discretionary Fund, 2014.103A-0 © Jeppe Hein, Courtesy of Johann König, Berlin, and 303 Gallery, New York. Photo by Tad Fruits.

## Page 30:

Left: Yoshiyuki Miyamae (Japanese, b. 1976) (designer), Issey Miyake (Japanese, b. 1938) (design house), *Dress*, Fall/Winter 2014, triacetate, polyester, Length: 46 in. Gift of Ann M. Stack, 2015.5 © Yoshiyuki Miyamae and Issey Miyake. Photo by Eric Lubrick.

Top: Marie Daugherty Webster (American, 1859–1956), *Poppy (quilt)*, 1909, linen appliquéed on cotton and quilted, 91-1/2 × 82-1/2 in. Webster Collection, Gift of Rosalind Webster Perry, 2014.108 © Marie Daugherty Webster. Photo by Drew Endicott.

Bottom: Alexander Hayden Girard (American, 1907–1993) (designer), *Creche Altarpiece with Display Box*, 18th century (box about 1959), painted wood, cloth, wood, silver, glass, A) altarpiece: 11 × 12 × 7-1/4 in. B) display box: 17-1/4 × 14-1/4 × 8-3/4 in. Gift of Margaret, Catherine, Elizabeth and Will Miller, MH2010.595A-B © Alexander Hayden Girard. Photo by Drew Endicott.

## Page 31:

Top: After Hans Holbein, the younger (German, 1497–1543), *Portrait of the Artist*, 1542, oil on wood, 4-5/8 (diam.) in. (panel). The Clowes Collection, 2014.90. Photo by Eric Lubrick.

Bottom: Johan Barthold Jongkind (Dutch, 1819–1891), Auguste Delâtre (French, 1822–1907), *The Towpath* (detail) from *Cahieir de six eaux-fortes, vues de Hollande*, 1862, etching on cream laid French paper, 6-5/8 × 8-1/4 in. (image) 14 × 20-1/2 in. (sheet). Gift of INB Financial Corporation by exchange, 2014.109.6. Photo by Eric Lubrick.

## Page 51:

George Nelson (American, 1908–1986) (designer), Herman Miller Furniture Company (American) (manufacturer), *Home Office Desk Model 4658*, 1946, mahogany, leather, chrome-plated steel, and aluminum, dimensions variable. Design Arts Society Fund, 2014.98A-F © George Nelson. Photo by Eric Lubrick.

## Back Cover:

Guests view works by the Old Masters in the Clowes Pavilion. Artwork: Rembrandt van Rijn (Dutch, 1606–1669), *Self-Portrait*, about 1629, oil on panel, 17-1/2 × 13-1/2 × 3/4 in. (panel) 27-1/2 × 24 × 3 in. (framed). Courtesy of The Clowes Fund, C10063. Photo by Eric Lubrick.



# INDIANAPOLIS MUSEUM OF ART IMA

4000 MICHIGAN ROAD  
INDIANAPOLIS IN 46208  
317-923-1331  
IMAMUSEUM.ORG

