

Hike in The Garden

ADVENTURE KIT



NEWFIELDS

Welcome! Get ready for a breath of fresh air in The Garden at Newfields.

This kit is recommended for families with children ages 4 to 10.

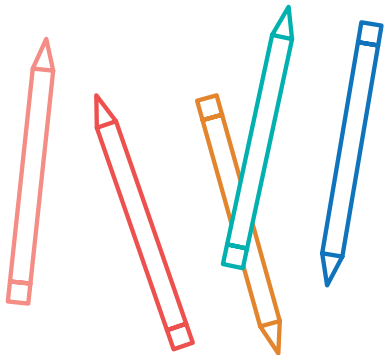
Helpful Tips

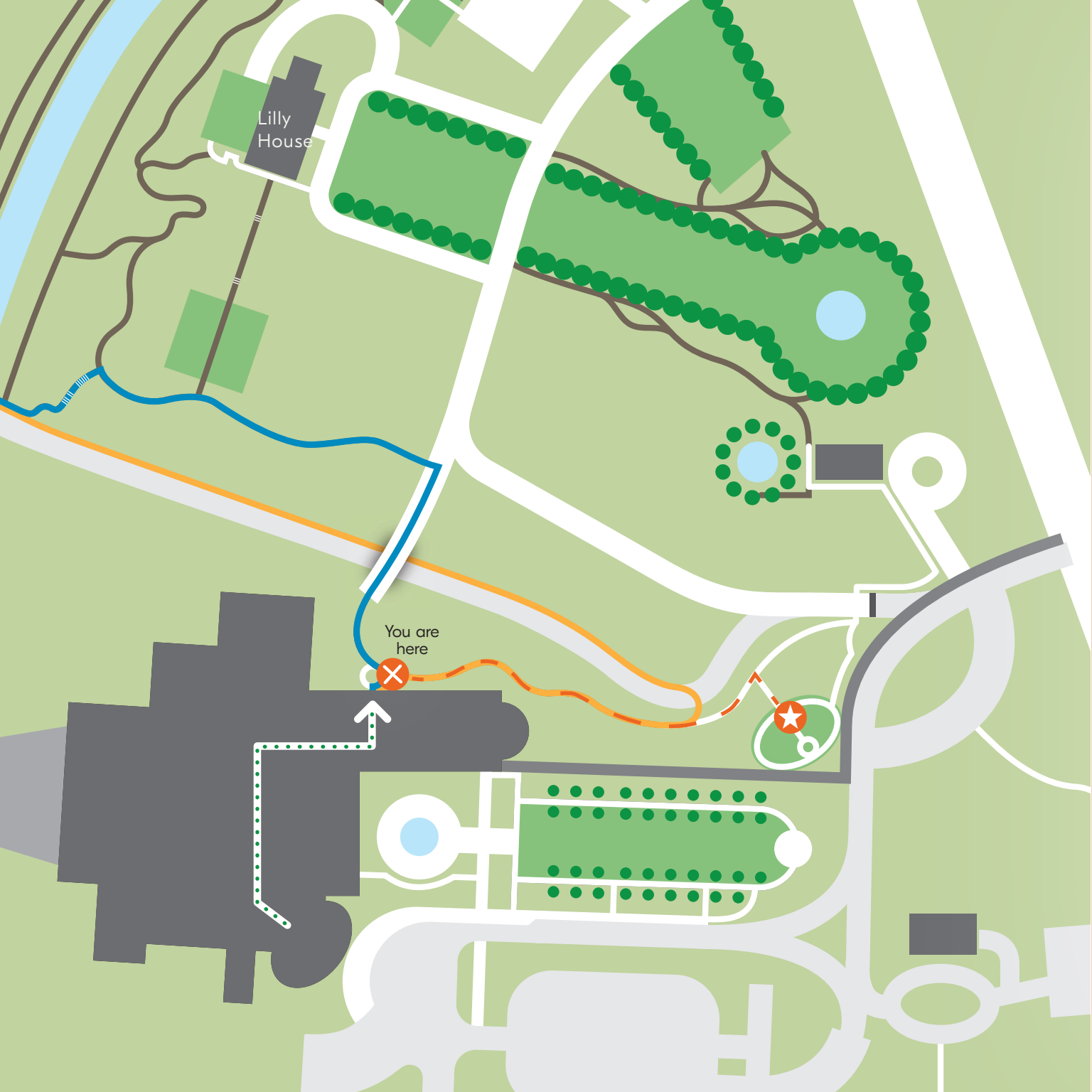
- **Safety First:** For your safety and the safety of the art, please do not touch. Pretend the artworks at Newfields are made of hot lava.
- **Be Flexible:** You can spend anywhere from 10 minutes to 2 hours with this kit. Let your child lead the way.
- **Bring It Back:** Please remember to make sure everything in is in your kit before it is returned, except the nature journal, which is yours to keep.

THANK YOU for helping us to make this a great experience for all.

Kit Contents

- Bag
- Map/Instructions
- Compass
- Magnifying glass
- Cardboard
- Paper
- String
- Colored pencils
- Do/See/Touch/Think sheet
- *The Curious Garden* by Peter Brown
- Hand sanitizer





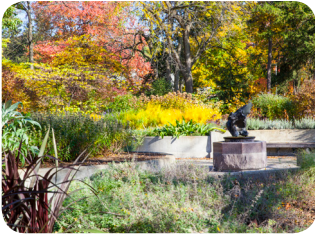
Lilly House

You are here

Stop 1: Nature Journal

THE GARDEN AT NEWFIELDS

Garden for Everyone



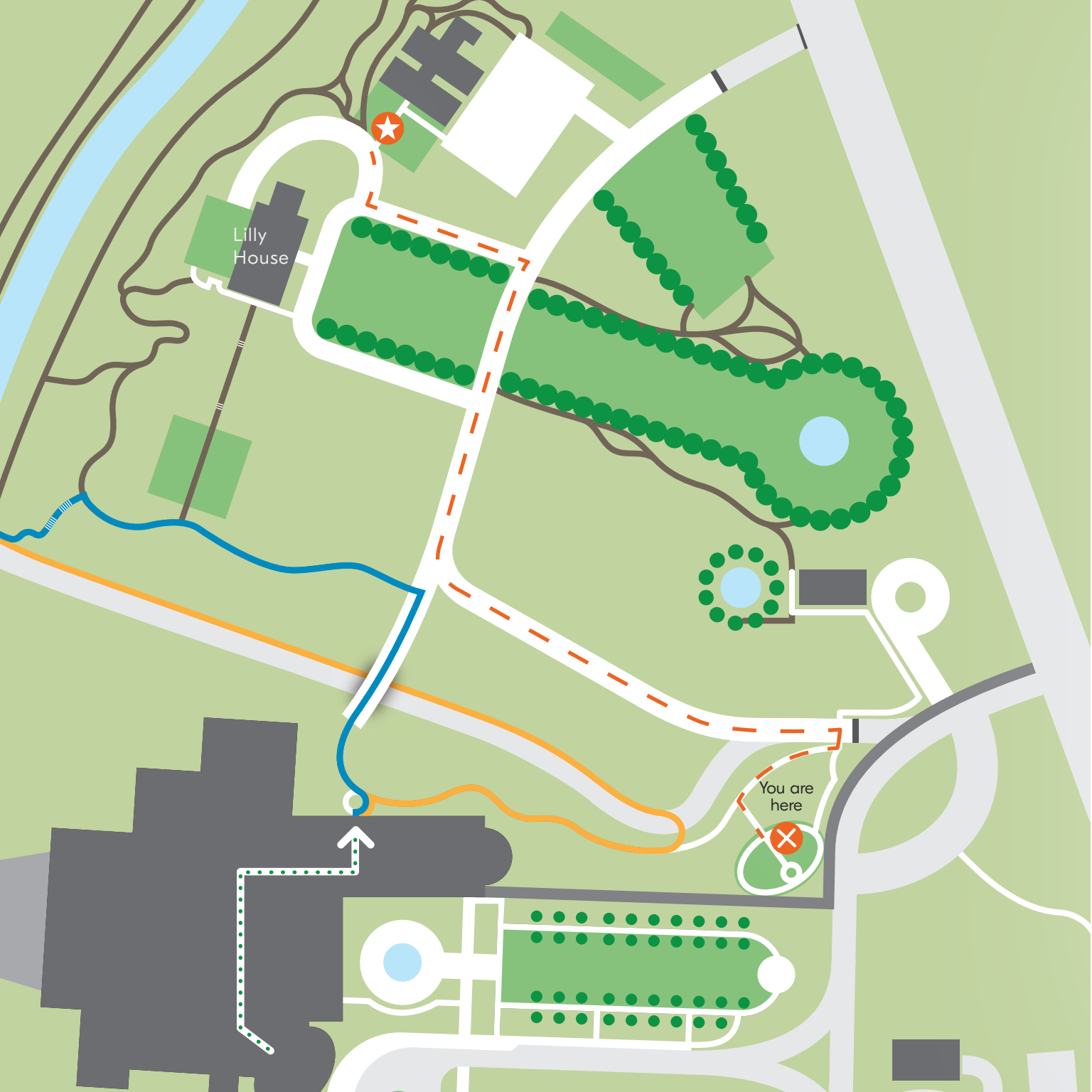
What season is it? How can you tell?

Use the magnifying glass to look at plants and bugs living in the garden. Now that you have looked around, make a journal to record what you see.

Make a nature journal using the cardboard, paper, Do/See/Touch/Think sheet and string from the Pack.

1. Put five sheets of paper and the Do/Think/See/Touch sheet between the two pieces of cardboard. Make sure the holes line up!
2. Lace the string through the holes and tie it securely.

This journal is yours to keep.



Lilly House

You are here

Stop 2: Reading a Sundial

GREENHOUSE, THE GARDEN AT NEWFIELDS

Sundial, Donated in memory of Jane S. Kohn

Using your compass, find north and face that way. Look at the sundial. Where is the shadow pointing?

Sundials use shadows from the sun to tell time. Can you tell what time it is?



Go into the Greenhouse and sketch a plant or flower using your nature journal.



You are here



Lilly House

Stop 3: Book & Look

LOGGIA, LILLY HOUSE

Fresco in Loggia, Douglas Riseborough



This artist was inspired by The Garden at Newfields.

Have you ever been somewhere that looks like this? When?

Read *The Curious Garden* by Peter Brown.